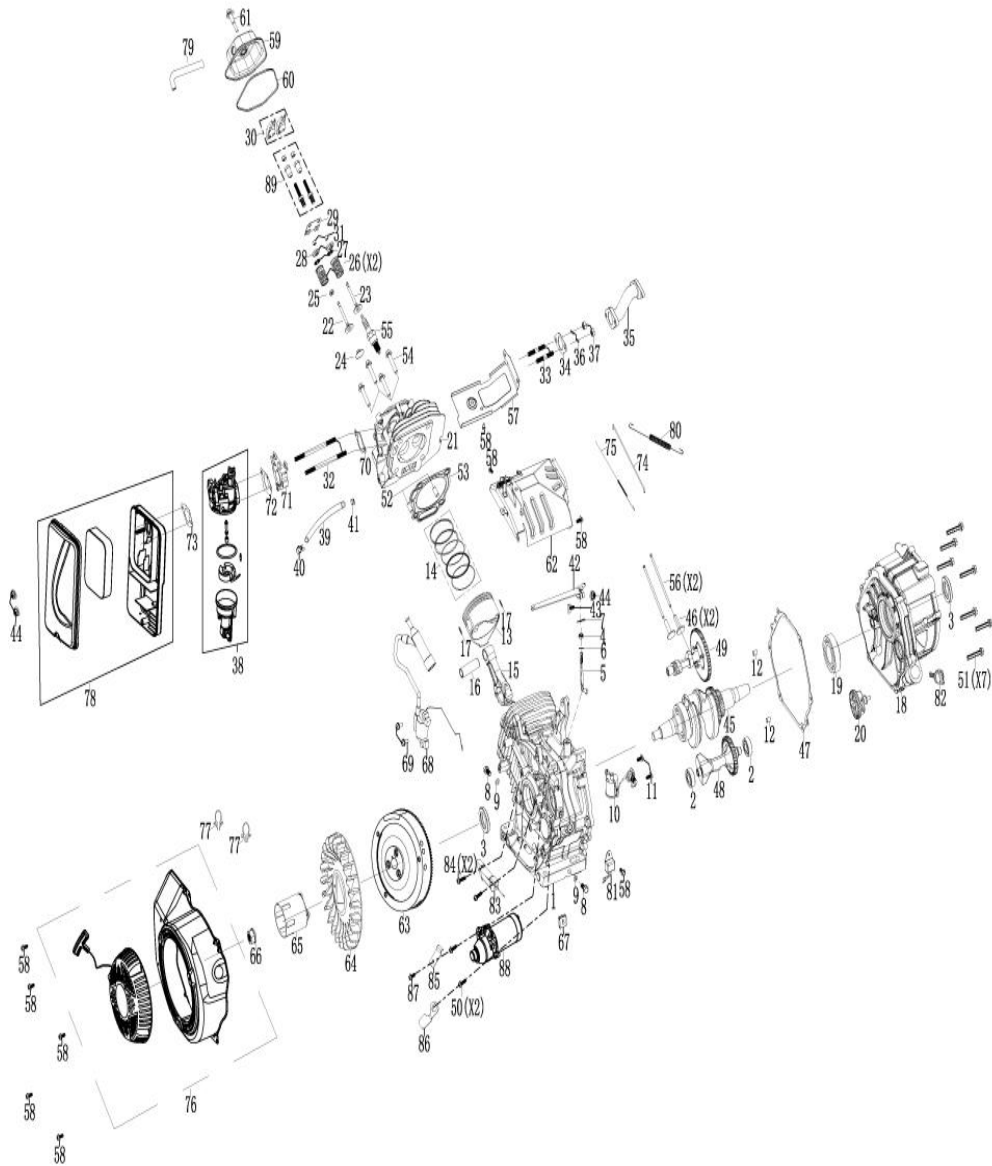


GENERADOR A GASOLINA 8,3 Kw 120/240 V

Parte: MOTOR

Código 495242

Modelo XGG8300E-I



GENERADOR A GASOLINA 8,3 Kw 120/240 V

Parte: MOTOR

Código 495242

Modelo XGG8300E-I



N°	Cód. Savake	Descripción Español	Descripción Ingles	Cant.	Observaciones
1			CRANKCASE	1	
2			BALL BEARING	2	
3			OIL SEAL	2	
4			SEAL,GOVERNOR ARM SHAFT	1	
5			SHAFT,GOVERNOR ARM	1	
6			WASHER,GOVERNOR ARM SHAFT	1	
7			PIN,LOCK	1	
8			BOLT, DRAIN PLUG	2	
9			WASHER,DRAIN PLUG	2	
10			SWITCH ASSEMBLY,OIL LEVEL	1	
11			BOLT M6X16	2	
12			DOWEL PIN,CASECOVER	2	
13			PISTON	1	
14			SCRAPER RING SET ,PISTON	1	
15	522086	BIELA P/XGG6500E-I/ XGG8300E-I	ROD ASSEMBLY., CONNECTING	1	
16			PIN, PISTON	1	
17			CLIP, PISTON	2	
18			COVER ASSEMBLY, CRANKCASE	1	
19			BALL BEARING	1	
20			GOVERNOR ASSEMBLY	1	
21	522193	CAMARA P/XGG6500E-I/ XGG8300E-I	CYLINDER HEAD	1	
22			VALVE,IN	1	
23			VALVE EXHAUST	1	
24			RETURNER,INTAKE VALVE	1	
25			OIL SEAL,VALVE	1	
26			SPRING,VALVE	2	
27			LOCKINMG FLAPS	4	
28			SEAT, VALVE SPRING,EX	2	
29			PLATE,PUSH ROD GUIDE	1	
30			ROCKER ASSY	2	
31			ROTATOR	2	
32			BOLT, STUD	2	
33			BOLT, STUD	2	
34			PACKING,EXHAUST	1	
35			EXHAUST PIPE	1	
36			SPRING WASHER	2	
37			NUT M8	2	

GENERADOR A GASOLINA 8,3 Kw 120/240 V

Parte: MOTOR

Código 495242

Modelo XGG8300E-I

N°	Cód. Savake	Descripción Español	Descripción Ingles	Cant.	Observaciones
38	522169	CARBURADOR P/XGG6500E-I/ XGG8300E-I	CARBURETOR ASSEMBLY	1	
39			FUEL LINE $\Phi 4 \times \Phi 8 \times 170$ MM	1	
40	522227	ABRAZADERA LINEA COMBUSTIBLE P/XGG6500E-I	CLIP,FUEL LINE $\Phi 7.5$	1	
41			RUBBER ,FUEL	1	
42			GOVERNOR ARM	1	
43			BOLT,GOVERNOR ARM	1	
44			NUT M6	3	
45	522300	CIGÜEÑAL P/XGG6500E-I/ XGG8300E-I	CRANKSHAFT ASSEMBLY	1	
46			LIFTER,VALVE	2	
47			PACKING,CASECOVER	1	
48			BALANCING SHAFT	1	
49			CAMSHAFT ASSEMBLY	1	
50			BOLT M8X35	2	
51			BOLT M8X40	7	
52			PIN, DOWEL	2	
53	522219	EMPAQUE CILINDRO P/XGG6500E-I/ XGG8300E-I	GASKET,CYLINDER HEAD	1	
54			BOLT M10X80	4	
55			SPARK PULG	1	
56			ROD,PUSH	2	
73			GASKET,AIR CLEANER	1	
74			ROD,GOVERNOR	1	
75			SPRING,THROTTL RETURN	1	
76			RECOIL STARTER ASSEMBLY	1	
77			Q TYPE LINE CARD	2	
78	522177	FILTRO AIRE P/XGG6500E-I/ XGG8300E-I	AIR CLEANER ASSEMBLY	1	
79			TUBE,BREATHER	1	
80			SPRING,GOVERNOR	1	
81	522045	SENSOR DE ACEITE P/XGG3600E-I/ XGG6500E-I/ XGG8300E-I	AMPLIFIER	1	
82			DIPSTICK	1	
83			CHARGE COIL	1	
84			BOLT M6X28	2	

GENERADOR A GASOLINA 8,3 Kw 120/240 V

Parte: MOTOR

Código 495242

Modelo XGG8300E-I

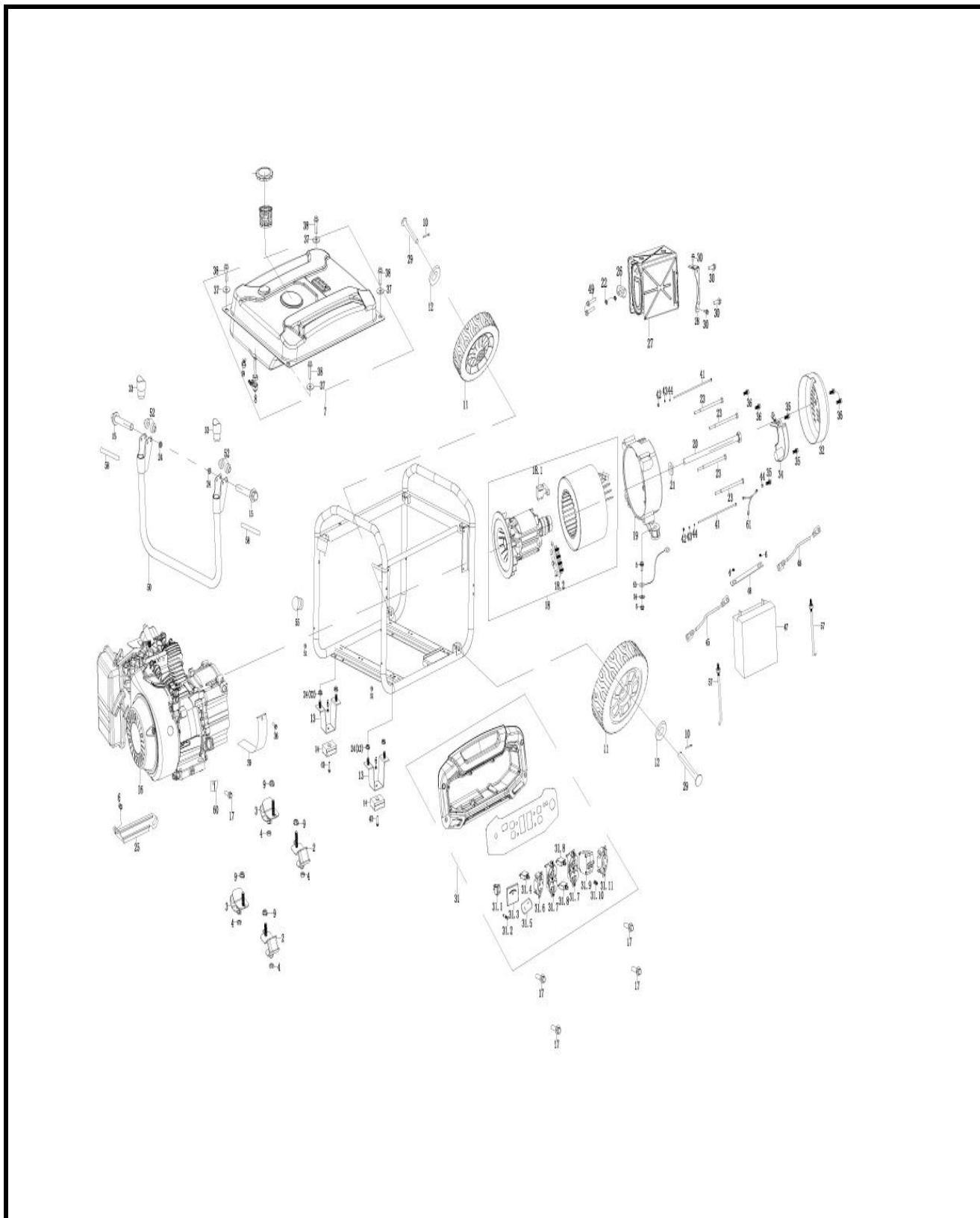
85			CLAMPER CORD A	1	
86			CLAMPER CORD B	1	
87			BOLT M6X8	1	
88			STARTING MOTOR ASSEMBLY	1	

GENERADOR A GASOLINA 8,3 Kw 120/240 V

Parte: GENERADOR

Código 495242

Modelo XGG8300E-I




GENERADOR A GASOLINA 8,3 Kw 120/240 V

Parte: GENERADOR

Código 495242

Modelo XGG8300E-I

N°	Cód. Savake	Descripción Español	Descripción Ingles	Cant.	Observaciones
1			FRAME	1	
2			ISOLATOR A	2	
3			ISOLATOR B	2	
4			NUT M8	4	
5			BOLT M6X12	1	
6			NUT M6	6	
7			FUEL TANK ASSEMBLY	1	
8	522292	LLAVE COMBUSTIBLE CON FILTRO P/XGG3600E-I/ XGG6500E-I/ XGG8300E-I	FUEL COCK	1	
9			NUT M10	4	
10			COTTER PIN	2	
11			WHEEL	2	
12			FLAT WASHER	2	
13			SUPPORT,FRAME	2	
14			VIBRATION ISOLATION PAD,SQUAR	2	
15			BOLT M8X50	2	
16			ENGINE ASSY DH420E	1	
17			BOLT M6X16	5	
18			STARTING MOTOR ASSEMBLY	1	
19			MOTOR STAND	1	
20			BOLT M10X1.25X275	1	
21			GASKET, ROTOR BOLT	1	
22			SPRING WASHER Ø8	2	
23			BOLT M6X190	4	
24			NUT M8	6	
25			BRACKET,AIR CLEANER	1	
26			GASKET,EXHAUST PIPE	1	
27			MUFFLER COMP	1	
28			MUFFLER BRACKET	1	
29			AXLE	2	
30			BOLT M8X16	4	
31			PANEL COMP	1	
31.1			FLAMEOUT SWITCH	1	
31.2			OIL ALARM LAMP	1	
31.3			VOLTMETER	1	
31.4			THERMAL PROTECTOR	1	
31.5			T TYPE DC SOCKET	1	
31.6			AMERICAN THREE-HOLE ANTI-TRIP	1	
31.7			AMERICAN DOUBLE SOCKET	2	
31.8			THERMAL PROTECTOR	2	
31.9			THE CIRCUIT BREAKER	1	
31.10			GROUND TERMINAL ASSEMBLY	1	

GENERADOR A GASOLINA 8,3 Kw 120/240 V

Parte: GENERADOR

Código 495242

Modelo XGG8300E-I

N°	Cód. Savake	Descripción Español	Descripción Ingles	Cant.	Observaciones
31.11			AMERICAN FOUR-HOLE ANTI-TRIP S	1	
32			END COVER,GENERATOR	1	
33			PLUG,HANDLE	2	
34	522268	AVR P/XGG8300E-I	AUTOMATIC VOLTAGE REGULATOR	1	
35			BOLT M5X16	3	
36			BOLT M5X12	5	
37			WASHER, FUEL TANK	4	
38			BOLT M6X25	4	
39			GUARD COVER,CRANKCASE	1	
40			BOLT M6X25	2	
41			BOLT M5X224	2	
42			NUT M5	2	
43			FLAT WASHER Ø5	2	
44			SPRING WASHER Ø5	3	
45			NEGATIVE LEAD	1	
46			POSITIVE LEAD	1	
47			BATTERY	1	
48			BATTERY HOLDER	1	
49			BOLT M8X30	2	
50			HANDLE ASSEMBLY	1	
51			RUBBER,HANDLE	2	
52			BUSH,HANDLE	4	
53			GROUNDING WIRE	1	
54			TOOTH TYPE GASKET Ø 6	1	
55			RACK PLUG	1	
56	522243	TAPA TANQUE COMBUSTIBLE P/XGG3600E- I/ XGG6500E-I/ XGG8300E-I	THE CAP	1	
57			BATTERY	2	
58			PIN, HANDLE	2	
59	522227	ABRAZADERA LINEA CMBUSTIBLE P/XGG6500E-I/	CLIP,FUEL LINE Ø7.5	1	
60			DUST SHIELD	1	
61			SHORT WIRES	1	