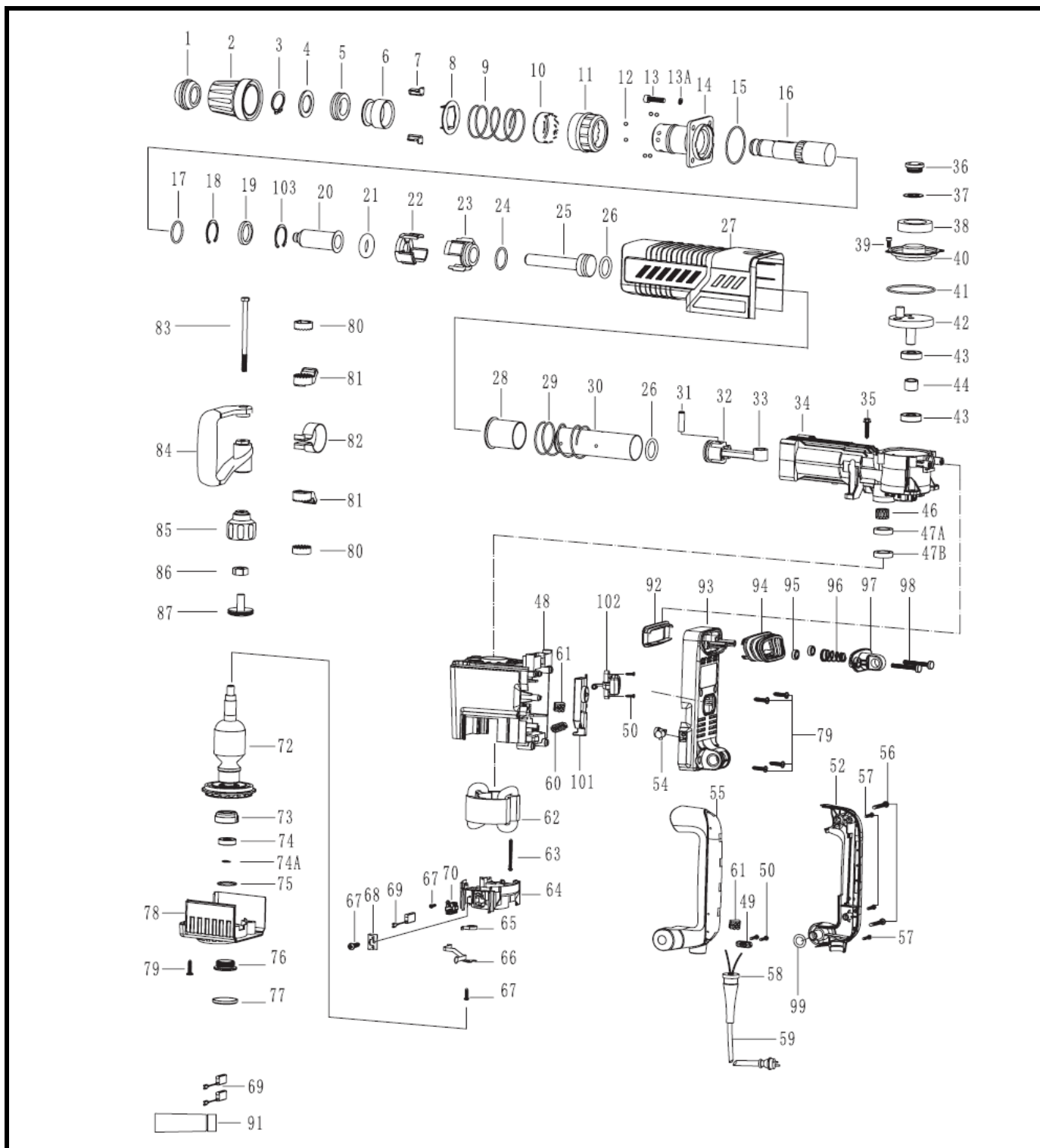


DEMOLEDOR 1500W 25J ACOPLE SDS MAX

Parte: MÁQUINA

Código: 490375

Modelo: HDDH1500-28 /TKDH-30-B



DEMOLEDOR 1500W 25J ACOPLE SDS MAX

 Parte: MÁQUINA

 Código: 490375

 Modelo: HDDH1500-28 /TKDH-30-B




N°	Cód. Savake	Descripción Español	Descripción Ingles	Cant.	Observaciones
1	505123	PROTECTOR DE LA PUNTA P/HDDH1500-28 /TKDH-30-B	Hammer rod protector		
2	505131	CUBIERTA DE LA PUNTA P/HDDH1500-28 /TKDH-30-B	Protective lining		
3			Φ30 Retaining Ring		
4			Support patch		
5			Shock absorption ring		
6			Move limited ring		
7			Insert block		
8			Change plate		
9			Support ring spring		
10			Support ring		
11			Move limited ring		
12			Φ6.5 Steel Ball		
13			Hex. Socket Bolt M8×30(12.9)		
13A			Φ8 Spring Washer		
14			Flange cover		
15			O-RingΦ63.5×Φ2.6		
16			Hammer rod sleeve		
17			Fluorin O Ring Φ31.6×Φ2.5		
18			Φ41 Retaining Ring		
19			Oil Seal Ring Φ32×Φ42×7		
20			Impact Pin		
21			O RingΦ22×Φ11		
22			Control plate		
23			Fixed Distance Sleeve		
24			O-RingΦ35×Φ3		
25			Impact block		

DEMOLEDOR 1500W 25J ACOPLE SDS MAX

 Parte: MÁQUINA

 Código: 490375

 Modelo: HDDH1500-28 /TKDH-30-B

N°	Cód. Savake	Descripción Español	Descripción Ingles	Cant.	Observaciones
26	504985	ANILLOS DEL PISTON Y GOLPEADOR P/HDDH1500-28 /TKDH-30-B	Fluorin O RingΦ30.4×Φ5		
27			Cover		
28			Control Sleeve		
29			Control Sleeve Spring		
30	505156	CILINDRO P/HDDH1500-28 /TKDH-30-B	Cylinder		
31			Piston Pin Φ10×38		
32	505057	PISTON P/HDDH1500-28 /TKDH-30-B	Piston		
33	505065	BIELA P/HDDH1500-28 /TKDH-30-B	Connecting Rod Ass'y		
34			Impact body		
35			Tapping screw ST6.3X32		
36			Oil Tank Cover		
37			Rubber Washer		
38			Felt Ring		
39			Hex .Socket Bolt M5×12		
40			Shell cover		
41			O-RingΦ79×Φ2.8		
42			Eccentric gear subassembl		
43			6002RS Ball Bearing		
44			Distance Ring		
46	505073	RODAMIENTO EN AGUJAS P/HDDH1500-28 /TKDH-30-B	Needle Bearing NK20×28×13		

DEMOLEDOR 1500W 25J ACOPLE SDS MAX

 Parte: MÁQUINA

 Código: 490375

 Modelo: HDDH1500-28 /TKDH-30-B

N°	Cód. Savake	Descripción Español	Descripción Ingles	Cant.	Observaciones
47A			Seal ring subassemblyΦ31xΦ20x6.4		
47B			Seal ring subassemblyΦ31xΦ19.7x6.8		
48			Housing Ass'y		
49			Cord Clip		
50			ST4.2×18 Tapping Screw		
52			Main Handle Cover		
54			Indicator		
55			Main Handle		
56			ST5.5×45 Tapping Screw		
57			ST4.2×22 Tapping Screw		
58			Cord Armor		
59			Cord		
60			0.18μH Electricity Feels		
61			Rivet		
62	505081	CAMPO 110-120V P/HDDH1500-28 /TKDH-30-B	Stator 110-120V		
63			ST4.8×58 Tapping Screw		
64	505164	BASE PORTA CARBONES P/HDDH1500-28 /TKDH-30-B	Carbon Brush bracket		
65			Helical spring		
66			Metal contact plate		
67			ST3.5x12 Cross recessed pan head tapping screws		
68			Metal insert		
69	505172	CARBONES P/HDDH1500-28 /TKDH-30-B	Carbon Brush		
70	505115	PORTA CARBONES P/HDDH1500-28 /TKDH-30-B	Carbon brush wire		
72	505099	INDUCIDO P/HDDH1500-28 /TKDH-30-B	Armature 220-240V		
72			Armature 110-120V		
73			Bearing Sleeve		
74			6200RS Ball Bearing		
74A			Φ10 Retaining Ring		
75			O-Ring Φ30×Φ2		
76			Screw ring		

DEMOLEDOR 1500W 25J ACOPLE SDS MAX

 Parte: MÁQUINA

 Código: 490375

 Modelo: HDDH1500-28 /TKDH-30-B

N°	Cód. Savake	Descripción Español	Descripción Ingles	Cant.	Observaciones
77			Protected cover		
78			Bearing Cover		
79			Tapping screw ST5.5X25		
80			Disk with gap		
81			Clamping		
82			Fixed belt		
83			Hexagon head bolt M8×130		
84			Side Handle		
85			Function Knob		
86			Nut M8(Thickness 6.4mm)		
87			Function Knob cover		
91			Oil Bottle		
92			Fixed Platen		
93			Main Handle Seat		
94			Shock Absorption Jacket		
95			Shock Absorption Ferrule		
96			Shock Absorption Spring		
97			Spring Rack		
98			M6×50(Φ18)Cross recessed pan head screws		
99			O-RingΦ16×Φ3		
101			Speed Adjuster 220-240V		
101	505727	REGULADOR DE VELOCIDAD P/HDDH1500-28 /TKDH-30-B	Speed Adjuster 110-120V		
102	505735	SWITCH ON/OFF P/HDDH1500-28 /TKDH-30-B	Switch Subassembly		
103			Φ42 Retaining Ring		