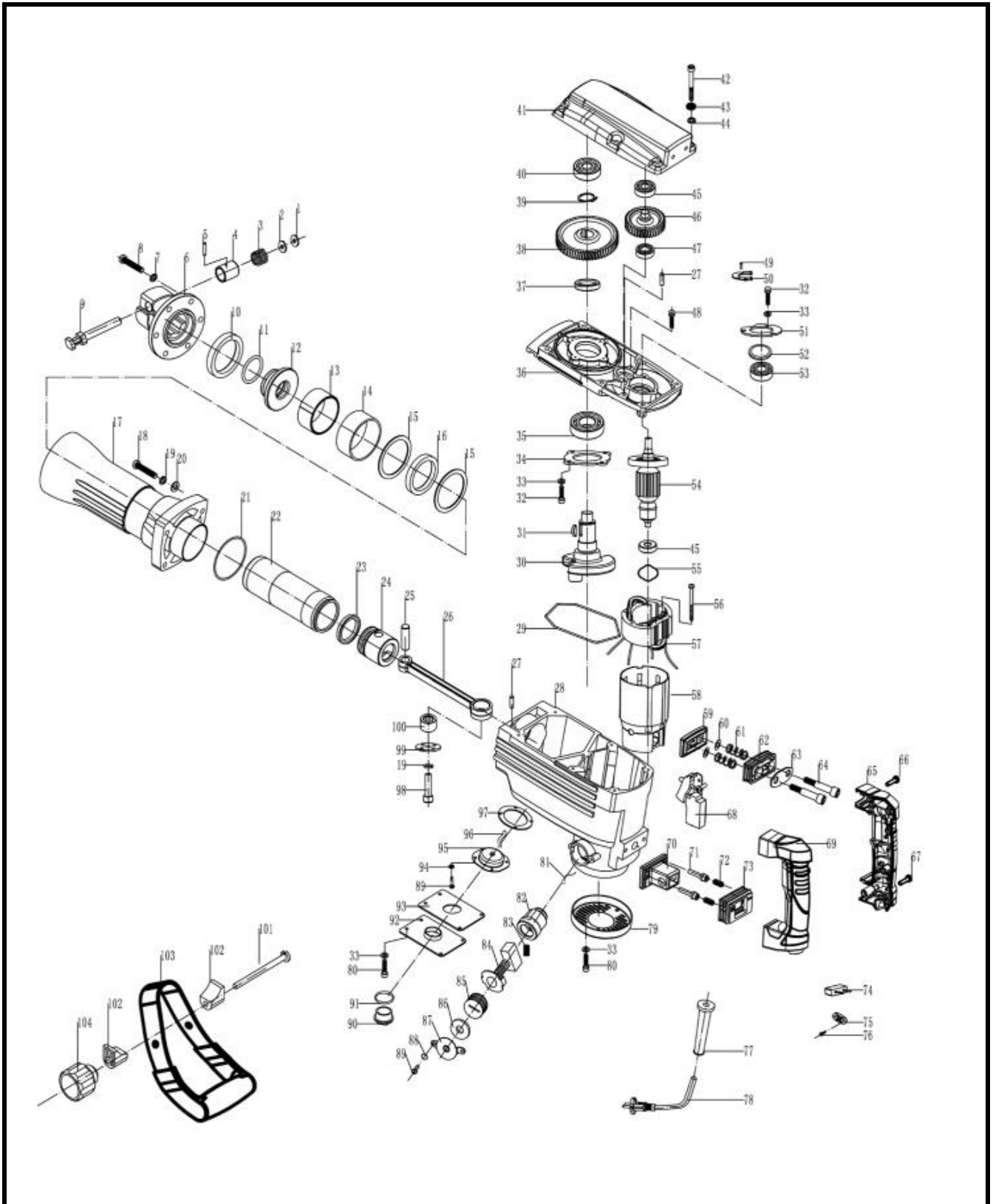


DEMOLEDOR 1240 W 42 J ACOPLÉ HEXAGONAL

Parte: Demoledor

Código 490292

Modelo HDDH1240-30/
TKDH-30-C



DEMOLEDOR 1240 W 42 J ACOPLÉ HEXAGONAL

 Parte: **Demoledor**

 Código 490292

 Modelo HDDH1240-30/TKDH-30-C






N°	Cód. Savake	Descripción Español	Descripción Ingles	Cant.	Observaciones
1			Washer12.5X18X0.8		
2			Washer 12.4X17.6X2.6		
3			Spring17.5X1.3X26.5		
4			Spring Case 23X28		
5			Spring Case 23X28		
6			Block Blessing		
7			Washer 10		
8			Nylock Hex.Socket Hd.Bolt M10X35		
9	505180	PASADOR DE LA PUNTA P/HDDH1240-30/TKDH-30-C	Stop Lever		
10	505297	DAMPER DE LA BOMBA P/HDDH1240-30/TKDH-30-C	Damper 47.5X66.5X14.3		
11	505305	ORING DE LA PUNTA P/HDDH1240-30/TKDH-30-C	O-Ring 23.6X5		
12			Shank Sleeve		
13			Split Sleeve		
14			Split Sleeve Ring64.5X67.5X27.5		
15			Big Washer 57.5X68.4X2		
16			Damper 58X68X9.3		
17	505339	CARCASA CILINDRO P/HDDH1240-30/TKDH-30-C	Cylinder case		
18			Nylock Hex.Socket Hd.Bolt M8X35		
19			Washer8		
20			Washer8		
21	505347	ORING DEL CILINDRO P/HDDH1240-30/TKDH-30-C	O-ring Φ60* Φ2		
22	505354	CILINDRO P/HDDH1240-30/TKDH-30-C	Cylinder		
23	505198	ANILLO DEL PISTON P/HDDH1240-30/TKDH-30-C	Piston O-Ring		
24	505206	PISTON P/HDDH1240-30/TKDH-30-C	Piston		
25			Pin 12X44		

DEMOLEDOR 1240 W 42 J ACOPLER HEXAGONAL

 Parte: Demoledor

 Código 490292

 Modelo HDDH1240-30/
TKDH-30-C


N°	Cód. Savake	Descripción Español	Descripción Ingles	Cant.	Observaciones
26	505230	BIELA P/HDDH1240-30/TKDH-30-C	Connecting Rod		
27			Pin 5*14		
28			Gear Box		
29	505362	EMPAQUE CARCAZA DEL CIGUEÑAL P/HDDH1240-30/TKDH-30-C	Inner Cover Ring		
30	505388	CIGUEÑAL P/HDDH1240-30/TKDH-30-C	Crankshaft		
31			Key 4X6.5X16		
32			Nylock Hex.Socket Hd.Bolt M5X25		
33			Spring Washer5		
34			Bearing cover		
35			Bearing 6205		
36			Inner Cover		
37			Ring 22.5X34X7.5		
38	505396	ENGRANAJE DEL CIGUEÑAL P/HDDH1240-30/TKDH-30-C	Gear (61)		
39			Ring 22		
40			Bearing 6302		
41			Bamping upper cover		
42			Nylock Hex.Socket Hd.Bolt M6X45		
43			Spring Washer6		
44			Washer6		
45			Bearing 6201		
46	505412	ENGRANAJE DEL INDUCIDO P/HDDH1240-30/TKDH-30-C	Small Gear		
47			Bearing 6001		
48			Nylock Hex.Socket Hd.Bolt M6X14		
49			Nylock Hex.Socket Hd.Bolt M5*20		
50			Bearing Plate 6001		
51			Bearing Plate 6203		
52			Bearing washer29.5X39.5X2		
53			Bearing 6203		
54	505248	INDUCIDO P/HDDH1240-30/TKDH-30-C	Rotor		
55			Washer 31*25*0.5		

DEMOLEDOR 1240 W 42 J ACOPLÉ HEXAGONAL

 Parte: Demoledor

 Código 490292

 Modelo HDDH1240-30/
TKDH-30-C

N°	Cód. Savake	Descripción Español	Descripción Ingles	Cant.	Observaciones
56			Self-tapping Screw ST4.8*60		
57	505263	CAMPO P/HDDH1240-30/TKDH-30-C	Stator		
58			Stator box		
59			Upper cover connecting seat		
60			Washer8		
61			Damping spring $\Phi 10.5 \times \Phi 1.3 \times 32 \times 6$		
62			Damping sleeve A		
63			Damping plate		
64			Damping screw M8x50		
65			Damping right handle		
66			Self-tapping Screw ST3.9X16		
67			Self-tapping Screw ST4.8X35		
68	505420	SWITCH P/HDDH1240-30/TKDH-30-C	Switch		
69			Damping lift handle		
70			Casing connecting seat		
71			Nylock Hex.Socket Hd.Bolt M6X25		
72			Damping spring $\Phi 8 \times \Phi 1 \times 15 \times 6.5$		
73			Damping sleeve B		
74	505438	CAPACITOR P/HDDH1240-30/TKDH-30-C	Capacitance		
75			Cable Plate		
76			Self-tapping Screw ST3.9X16		
77			Cable sheath		
78			Cable		
79			Chassis		
80			Nylock Hex.Socket Hd.Bolt M5X12		
81			Tension spring		
82			Brush Holder washer		
83			Hexagon socket set screw M5*8		
84			Brush		
85			Brush Cover		
86			Brush holder plate		
87			Brush Cover		
88			Spring Washer 4		
89			Cross bolt M4X16		
90			Oil eye		
91			O-Ring W23*2		
92			Oil box Cover		
93			Oil box Cover washer		
94			Flat Washer 4		

DEMOLEDOR 1240 W 42 J ACOPLÉ HEXAGONAL

Parte: Demoledor

Código 490292

Modelo HDDH1240-30/
TKDH-30-C

N°	Cód. Savake	Descripción Español	Descripción Ingles	Cant.	Observaciones
95			Oil core Holder		
96			Oil core		
97			Oil core Holder Seal		
98			Nylock Hex.Socket Hd.Bolt M8*30		
99			Neddle Bearing Board 34*2.2		
100	505289	RODAMIENTO DE AGUJA P/HDDH1240-30/TKDH-30-C	Neddle Bearing NK18/20		
101			Knob boltM8*110		
102			Hand Set		
103			Auxiliary handle		
104			Knob		