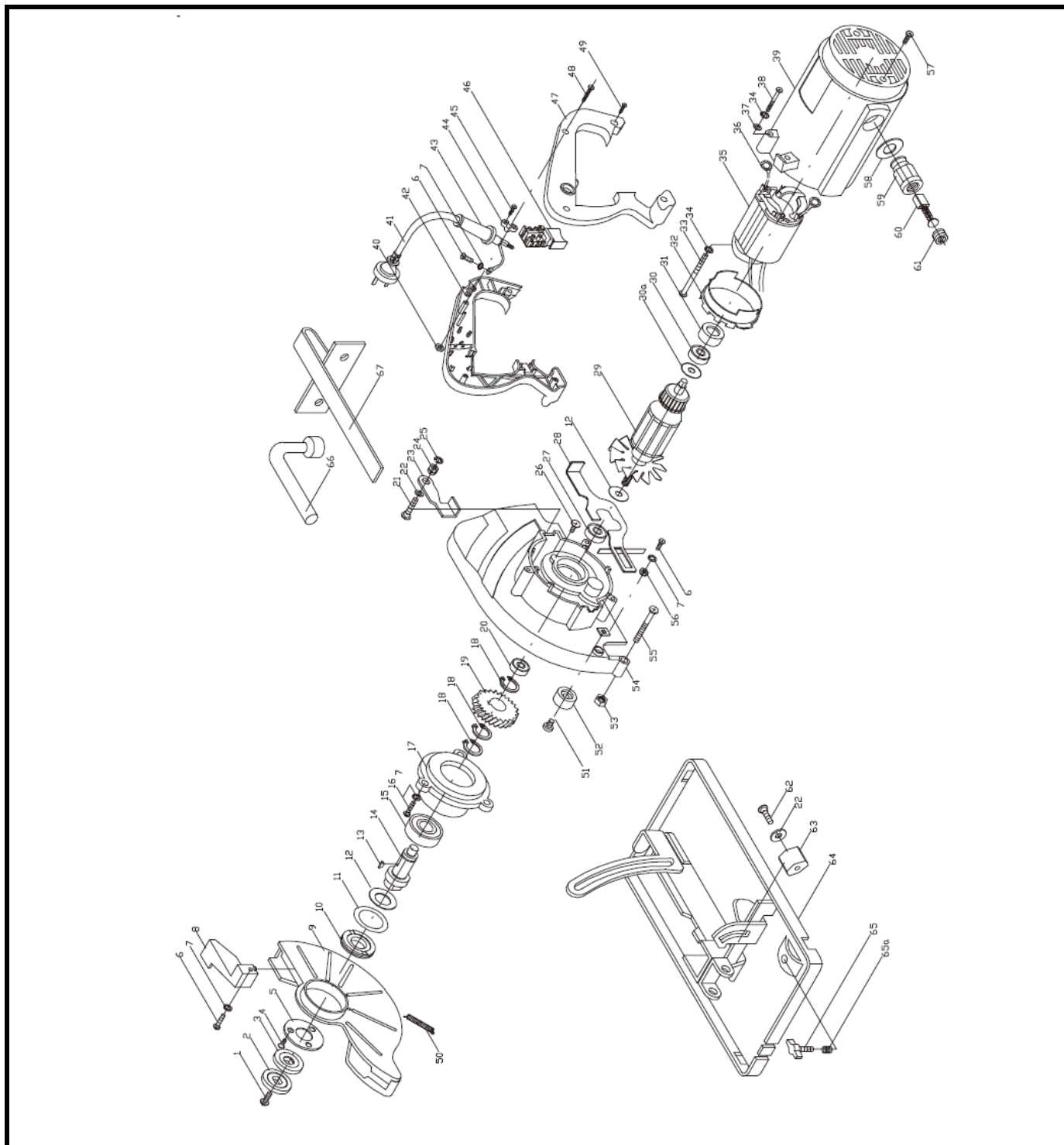


SIERRA CIRCULAR 1200W 7"

Parte: MÁQUINA

Código: 383026

Modelo: HDCS1200-7  
/TKCS-185-C




## SIERRA CIRCULAR 1200W 7"

 Parte: MÁQUINA

 Código: 383026

 Modelo: HDCS1200-7 /TKCS-185-C

N°	Cód. Savake	Descripción Español	Descripción Ingles	Cant.	Observaciones
1			Bolt M8x16		
2			Nut		
3			Inner flange		
4			Screw M4x10		
5			Cover		
6			Screw M4x8		
7			Spring washer		
8			Knob		
9			Wheel guard		
10			Bearing holder		
11			Wave washer		
12			Insulation ring		
13			Half round pin		
14			Spindle		
15			Bearing 6201		
16			Screw M4x12		
17			Front cover		
18			Retaining ring		
19	390229	ENGRANAJE P/HDCS1200-7 /TKCS-185-C	Gear		
20			Bearing 626		
21			Screw M6x20		
22			Flat washer		
23			Depth adjust knob		
24			Nut M4		
25			Retaining ring $\varnothing 8$		
26			Screw M4x8		
27			Bearing 6001		
28			Lock bar		

## SIERRA CIRCULAR 1200W 7"

 Parte: MÁQUINA

 Código: 383026

 Modelo: HDCS1200-7 /TKCS-185-C


N°	Cód. Savake	Descripción Español	Descripción Ingles	Cant.	Observaciones
29	390187	INDUCIDO P/HDCS1200-7 /TKCS-185-C	Armature		
30a			Insulation ring		
30			Bearing 608		
31			Bearing sleeve		
32			Baffle plate		
33			Screw M5x65		
34			Spring washer Ø5		
35	390195	CAMPO P/HDCS1200-7 /TKCS-185-C	Stator		
36			Garter spring		
37			Flat washer Ø5		
38			Screw M5x35		
39			Motor housing		
40			Screw M5		
41			Power cord		
42			Handle		
43			Cord guard		
44			Strain relief		
45			Screw M4x14		
46	390203	SWITCH ON/OFF P/HDCS1200-7 /TKCS-185-C	Switch		
47			Handle		
48			Screw M5x25		
49			Screw ST4x18		
50			Garter spring		
51			Screw M6x12		
52			Rubber ring		
53			Nut M6		
54			Motor bracket		

## SIERRA CIRCULAR 1200W 7"

 Parte: MÁQUINA

 Código: 383026

 Modelo: HDCS1200-7 /TKCS-185-C

N°	Cód. Savake	Descripción Español	Descripción Ingles	Cant.	Observaciones
55			Screw M6x40		
56			Nut M4		
57			Screw M4x12		
58			Washer		
59			Brush holder		
60	390211	CARBONES P/HDCS1200-7 /TKCS-185-C	Carbon brush		
61			Brush holder cap		