

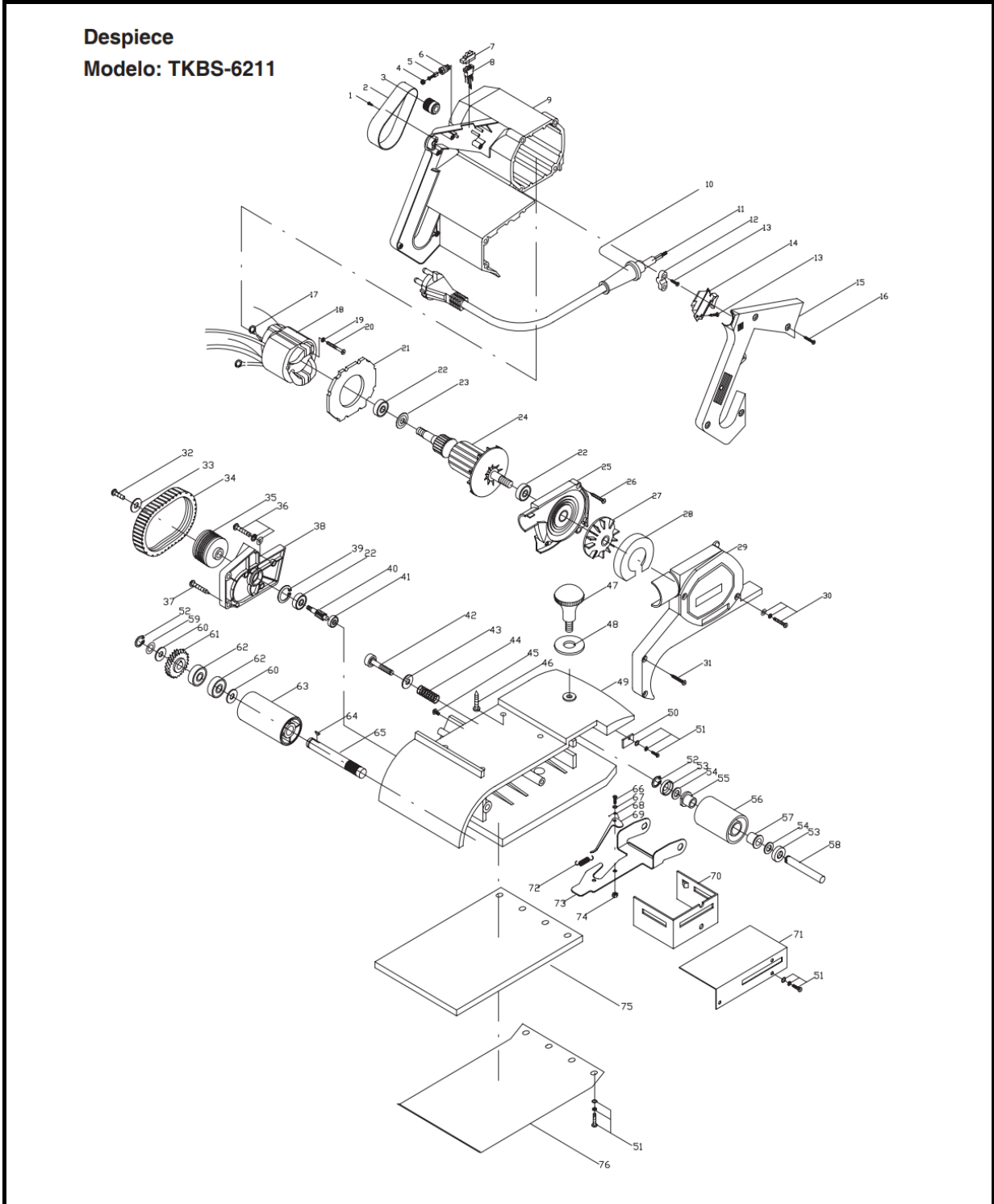


LIJADORA DE BANDA 950 WATTS CON COLECTOR

Parte: Lijadora

Código 382952

Modelo TKBS-6211




LIJADORA DE BANDA 950 WATTS CON COLECTOR

 Parte: Lijadora

 Código 382952

 Modelo TKBS-6211

N°	Cód. Savake	Descripción Español	Descripción Ingles	Cant.	Observaciones
1			Screw		
2			Belt cover		
3			Belt pulley		
4			Brush cap		
5	390468	CARBONES P/TKBS-6211	Carbon brush		
6			Brush holder		
7			Switch set		
8			Speed control switch		
9			Housing		
10			Cable sheath		
11			Cable		
12			Cable clamp		
13			Screw		
14	390443	SWITCH DE ENCENDIDO P/TKBS-6211	Switch		
15			Handle cover		
16			Screw		
17			Drag spring		
18	390401	CAMPO P/TKBS-6211	Stator		
19			Spring washer		
20			Screw		
21			Intermediate ring		
22			Bearing		
23			Dustproof sheet		
24	390344	INDUCIDO P/TKBS-6211	Armature		
25			Edge cover		
26			Screw		
27			Fan		
28			Fan cover		
29			Side cover		
30			Screw		
31			Screw		
32			Screw		
33			Flat washer		
34			Belt		
35			Belt wheel		
36			Screw		

LIJADORA DE BANDA 950 WATTS CON COLECTOR

 Parte: Lijadora

 Código 382952

 Modelo TKBS-6211

N°	Cód. Savake	Descripción Español	Descripción Ingles	Cant.	Observaciones
37			Screw		
38			Side cover		
39			Snap ring		
40			Gear shaft		
41			Bearing		
42			Screw		
43			Flat washer		
44			Adjusting spring		
45			Screw		
46			Screw		
47			Handle		
48			Shim		
49			Aluminum shell		
50			Iron sheet		
51			Screw		
52			Snap ring		
53			Steel bowl		
54			Wool pad		
55			Steel sleeve		
56			Aluminum drum		
57			Copper sleeve		
58			Aluminum drum shaft		
59			Wave washers		
60			Shim		
61			Gear		
62			Bearing		
63			Rubber roller		
64			Woodruff key		
65			Rubber roller shaft		
66			Screw		
67			Flat washer		
68			Torsion spring		
69			Wrench		
70			Elbow		
71			Angle		
72			Drag spring		
73			Sheet		
74			Nut		
75			Rubber sheet		
76			Flat iron sheet		