

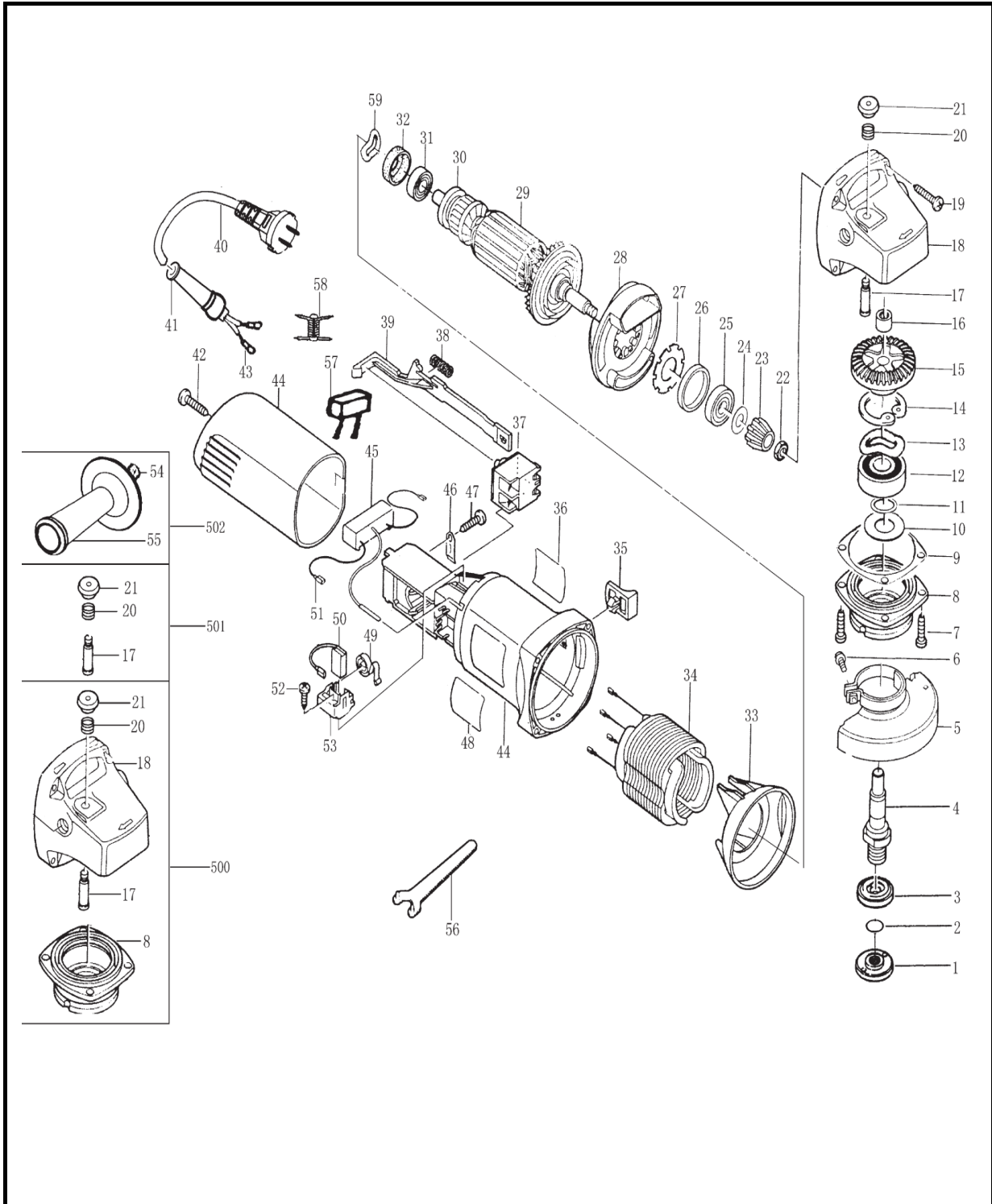


MINIPULIDORA 4 1/2" 850 WATTS

Parte: Minipulidora

Código 147678

Modelo TKAG-115-D



MINIPULIDORA 4 1/2" 850 WATTS

 Parte: Minipulidora

 Código 147678

 Modelo TKAG-115-D

N°	Cód. Savake	Descripción Español	Descripción Ingles	Cant.	Observaciones
1			Platen		
2			O Ring		
3			Platen		
4			Spindle		
5			Protective Cover		
6			Pan Head		
7			Machine Screw		
8			Bearing Set		
9			Space Ring		
10			Shim		
11			Shim		
12			Bearing		
13			Elastic Washer		
14			Retaining Ring		
15	389585	ENGRANAJE PARA TKAG-115-D	Bevel Gear		
16			Needle Bearing		
17			Locking Pin		
18			Gear Housing		
19			Self-Tapping Screw		
20			Auto locking		
21			Spindle Locking		
22			Glue Nut		
23			Bevel Gear		
24			Shim		
25			Bearing		
26			Rubber Ring		
27			Tooth Washer		
28			Intermediate Plate		
29	389536	INDUCIDO P/TKAG-115-D	Armature		
30			Insulation Washer		
31			Bearing		
32			Bearing Housing		
33			Air Deflector		
34	389544	CAMPO P/TKAG-115-D	Stator		
35	389551	SWITCH DE ENCENDIDO P/TKAG-115-D	Switch Button		



MINIPULIDORA 4 1/2" 850 WATTS

Parte: Minipulidora

Código 147678

Modelo TKAG-115-D

N°	Cód. Savake	Descripción Español	Descripción Ingles	Cant.	Observaciones
36			Label		
37			Switch		
38			Spring		
39			Switch Slide		
40			Cord		
41			Cable Shield		
42			Self-Tapping Screw		
43			No Cap Lugs		
44			Motor Housing And Cover		
45			Capacitance		
46			Cord Clamp		
47			Self-Tapping Screw		
48			Nameplate		
49			Brush Spring		
50	389577	CARBONES P/TKAG-115-D	Carbon Brush		
51			Plugging		
52			Self-Tapping Screw		
53			Brush Holder		
54			Outer Hex Socket Head Screw		
55			Side Handle		
56			Wrench		
59			Elastic Washer		
500			Side Handle Discreteness		
501			Brake Sets		
502			Side Handle Discreteness		