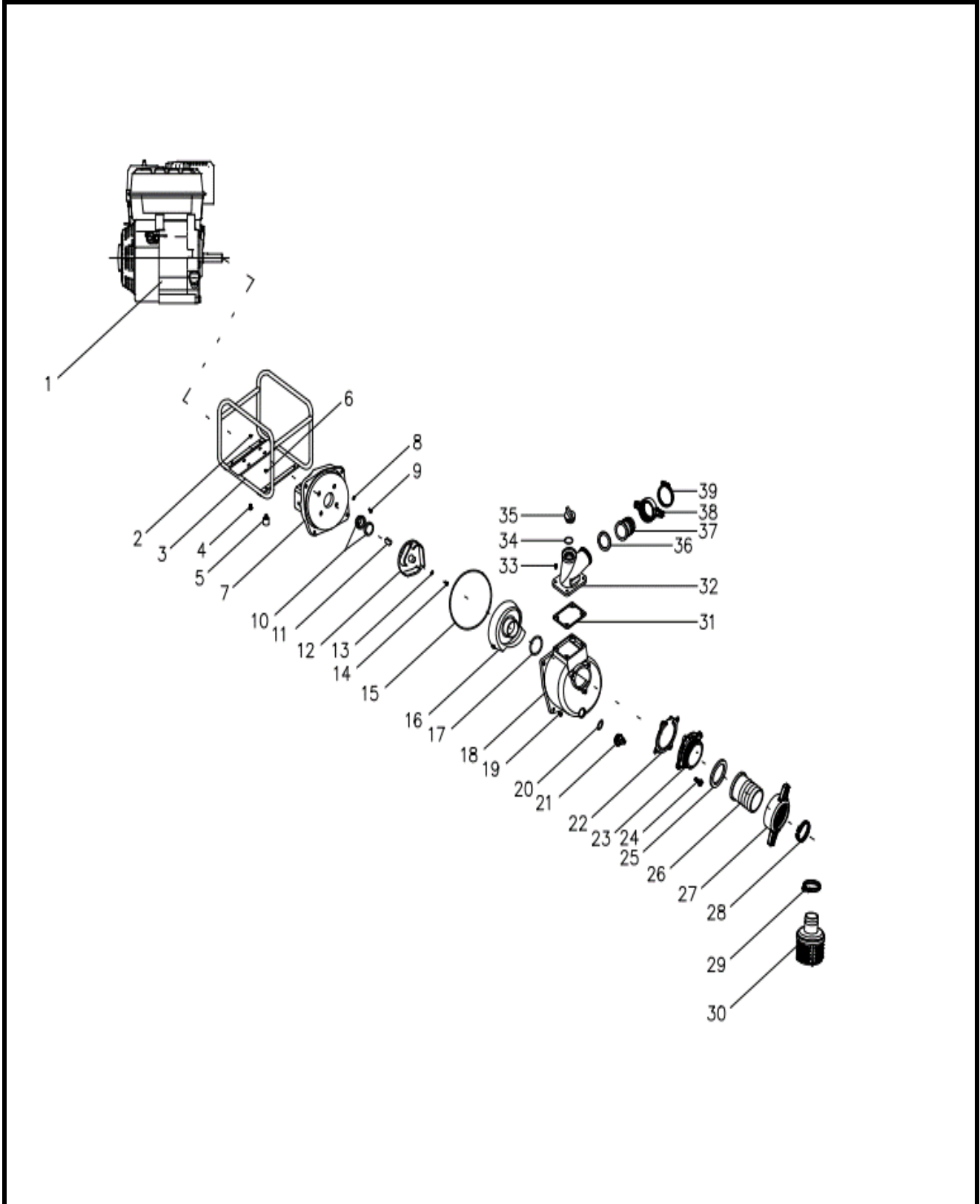


MOTOBOMBA A GASOLINA AUTOCEBANTE 2" x 2" CON MOTOR HONDA

Parte: MOTOBOMBA

Código 509109

Modelo ZGWP2P



MOTOBOMBA A GASOLINA AUTOCEBANTE 2" x 2" CON MOTOR HONDA

Parte: MOTOBOMBA

Código 509109

Modelo ZGWP2P

| N° | Cód. Savake | Descripción Español | Descripción Ingles | Cant. | Observaciones |
|----|-------------|---------------------|--|-------|---------------|
| 1 | | | Engine GX160 | 1 | |
| 2 | | | nut M8 | 4 | |
| 3 | | | frame | 1 | |
| 4 | | | bolt M8x30 | 4 | |
| 5 | | | rubber feet $\phi 27 \times 25$ | 4 | |
| 6 | | | nut M8 | 4 | |
| 7 | | | pump cover | 1 | |
| 8 | | | seal gasket $\phi 8 \times \phi 16 \times 2$ | 4 | |
| 9 | | | bolt M8x50 | 4 | |
| 10 | | | Mechanical seal | 1 | |
| 11 | | | key (Q,S shaft only) | 1 | |
| 12 | | | impeller | 1 | |
| 13 | | | seal gasket $\phi 8 \times \phi 16 \times 2$ | 1 | |
| 14 | | | bolt M8x25 | 1 | |
| 15 | | | O seal 196x4 | 1 | |
| 16 | | | diffuser | 1 | |
| 17 | | | O seal 53x7 | 1 | |
| 18 | | | pump body | 1 | |
| 19 | | | bolt M8x25 | 4 | |
| 20 | | | O sael 23.6x3.55 | 1 | |
| 21 | | | plug | 1 | |
| 22 | | | check valve | 1 | |
| 23 | | | inlet | 1 | |
| 24 | | | bolt M8x20 | 3 | |
| 25 | | | rubber seal gasket | 1 | |
| 26 | | | connect pipe | 1 | |
| 27 | | | connect spanner | 1 | |
| 28 | | | connect clip | 1 | |
| 29 | | | connect clip | 1 | |
| 30 | | | water filter | 1 | |
| 31 | | | outlet square seal gasket | 1 | |
| 32 | | | outlet | 1 | |
| 33 | | | bolt M8x25 | 4 | |
| 34 | | | O sael 23.6x3.55 | 1 | |
| 35 | | | plug | 1 | |
| 36 | | | rubber seal gasket | 1 | |
| 37 | | | connect pipe | 1 | |
| 38 | | | connect spanner | 1 | |
| 39 | | | connect clip | 1 | |