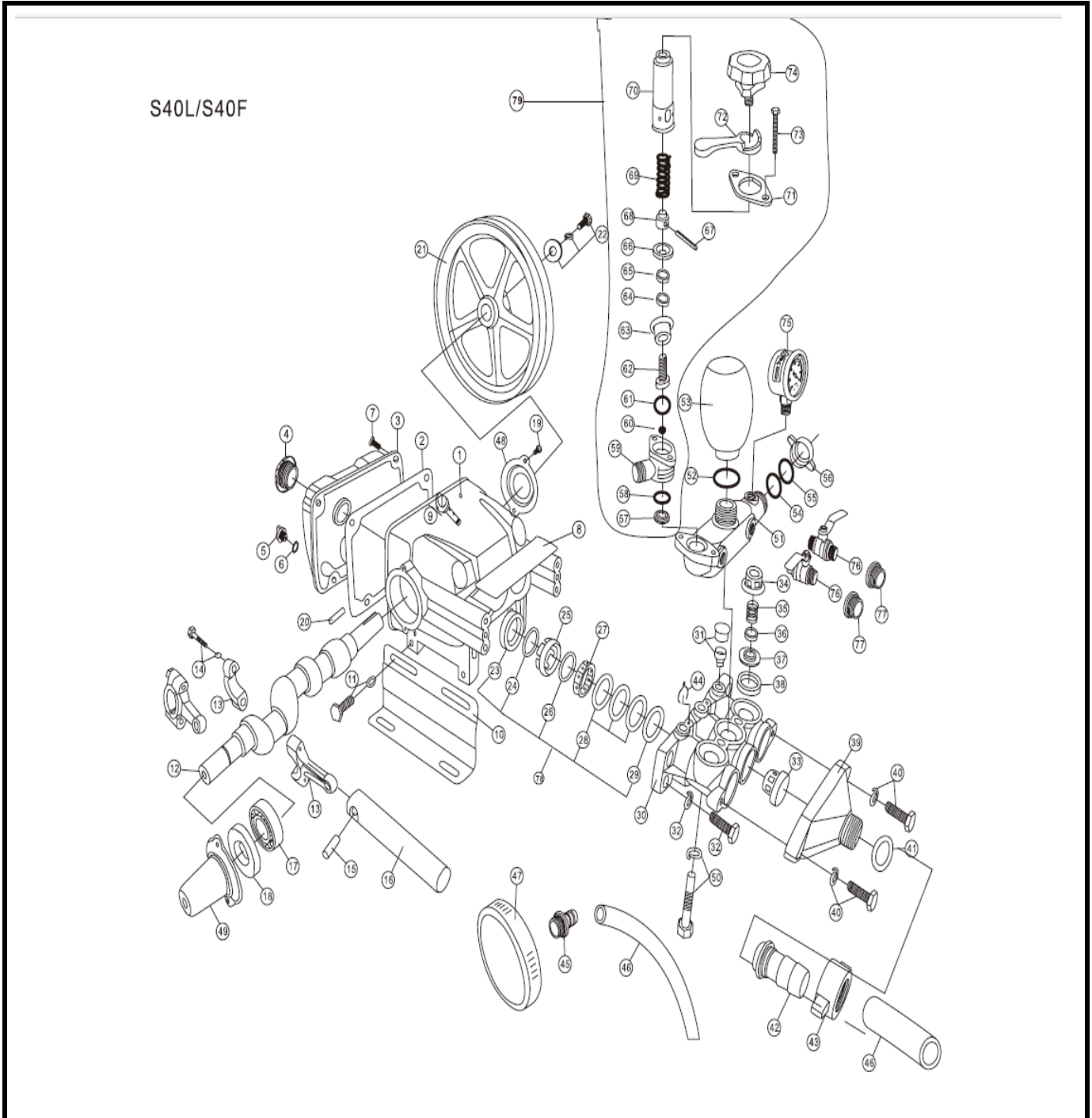


BOMBA PARA FUMIGADORA ESTACIONARIA 45 L

Parte: BOMBA

Código 505990

Modelo XP45-I



BOMBA PARA FUMIGADORA ESTACIONARIA 45 L

Parte: BOMBA

Código 505990

Modelo XP45-I

N°	Cód. Savake	Descripción Español	Descripción Ingles	Cant.	Observaciones
1			Crank Case	1	
2			Gasket, Crank Case	1	
3			Cover, Crank Case	1	
4			Oil Gauge with o'ring (new)	1	
5			Plug Drain 10x16	1	
6			O-Ring 17.5X2.5X9	1	
7			Screw 6x12	6	
8			Plunger Cover	1	
9			Plug	1	
10			Bed, Crank Case	2	
11			Bolt Washer Spring 10x16	4	
12			Crank Shaft	1	
13	473785	BIELA BOMBA P/XP45-I/XPS45-I	Connecting Rod Assy	3	
14			Bolt Washer Spring 6x30	6	
15			Plunger Pin 10X29.5	3	
16	404913	EMBOLO PISTON P/XP45-I/XPS45S-I	Plunger 3 x 30mm	3	
17			Bearing	2	
18			Oil Seal, Crank Shaft 25x52x8	2	
19			Bolt 5205	8	
20			Key	1	
21	434118	POLEA P/XP45-I	Pulley 230mmOD x 9/10"SD	1	
22			Bolt 8x20	1	
23			Oil Seal, Plunger 30x42x10	3	
24			Stopping Ring Water	3	
25			Grand	3	

BOMBA PARA FUMIGADORA ESTACIONARIA 45 L

Parte: BOMBA

Código 505990

Modelo XP45-I

N°	Cód. Savake	Descripción Español	Descripción Ingles	Cant.	Observaciones
26			Crease Seal	3	
27			Crease Ring	3	
28			V.Packing	9	
29			V.Packing Seat	9	
30			Cylinder IRON	1	
31			Grease Cup	3	
32			Bolt Washer Spring 8x30	4	
33	434175	VALVULA INTERNA CHECK P/XP45-I /XPS45S-I	Valve Assy ?(stainless iron)	6	
34			Valve Box	6	
35			Valve Spring	6	
36			Valve Flat	6	
37			Valve Seat	6	
38			Valve Seal	6	
39	528448	TAPA DE SUCCION P/XP45-I/ XPS45S-I	Suction Metal IRON	1	
40			Bolt Washer Spring 10x35	2	
41	404970	MANGUERA DE SUCCIÓN P/XP45-I/XPS45S-I	Packing	1	
42			Core,coupling	1	
43			coupling	1	
46			P.V.C hose	1	
44			clip	3	
45			cote , strainger	1	
46			P.V.C hose	1	
47	433573	FILTRO DE SUCCIÓN P/XP22-I / XPS22S-I / XP45-I / XPS45S-I	strainer ass'y	1	
48			cover,oil seal	1	
49			cover,oil seal	1	
50			Bolt Washer Spring 10x55	2	

BOMBA PARA FUMIGADORA ESTACIONARIA 45 L

Parte: BOMBA

Código 505990

Modelo XP45-I



N°	Cód. Savake	Descripción Español	Descripción Ingles	Cant.	Observaciones
51	473769	BASE CAMARA AIRE P/XP45-I / XPS45S-I	discharge metal IRON	1	
52			O-Ring 30x2.4	1	
53	473835	CAMARA AIRE P/XP45-I/XPS45S-I	Air chamber	1	
54			O-Ring 30x20x16	1	
55			Flat	1	
56			coupling	1	
57			Valve Seat	1	
58			O-Ring 20x2.65	1	
59			Valve IRON	1	
60			Stainless steel ball	1	
61			O-Ring 26x2.4	1	
62			spindle	1	
63			overflow valve seat	1	
64			oil seal of overflow 17x8x5	1	
65			oil seal of overflow 17x8x5	1	
66			Packing	1	
67			pin 4X3.5	1	
68			Upper metal	1	
69			Spring	1	
70			Spring box	1	
71			pressure plank	1	
72			Knob control	1	
73			Screw 6x50	2	
74			Pressure adjusting screw	1	
75	488882	MANOMETRO P/XP45-I/ XPS45S-I	Pressure gauge	1	

BOMBA PARA FUMIGADORA ESTACIONARIA 45 L

Parte: BOMBA

Código 505990

Modelo XP45-I

N°	Cód. Savake	Descripción Español	Descripción Ingles	Cant.	Observaciones
76	474171	LLAVE SALIDA ROSCA MASCHO P P/XP22-I / XPS22S-I / XP45-I / XPS45S- I	outlet cock	2	
77			outlet cock connector	2	
78	434142	KIT DE EMPAQUES P/XP45-I/XPS45S-I	seal assy' of plunger	9	
79	433722	VALVULA REGULADORA COMP P/XP22-I / XPS22S-I / XP45-I / XPS45S- I	adjusting assy with valve body(iron)	1	