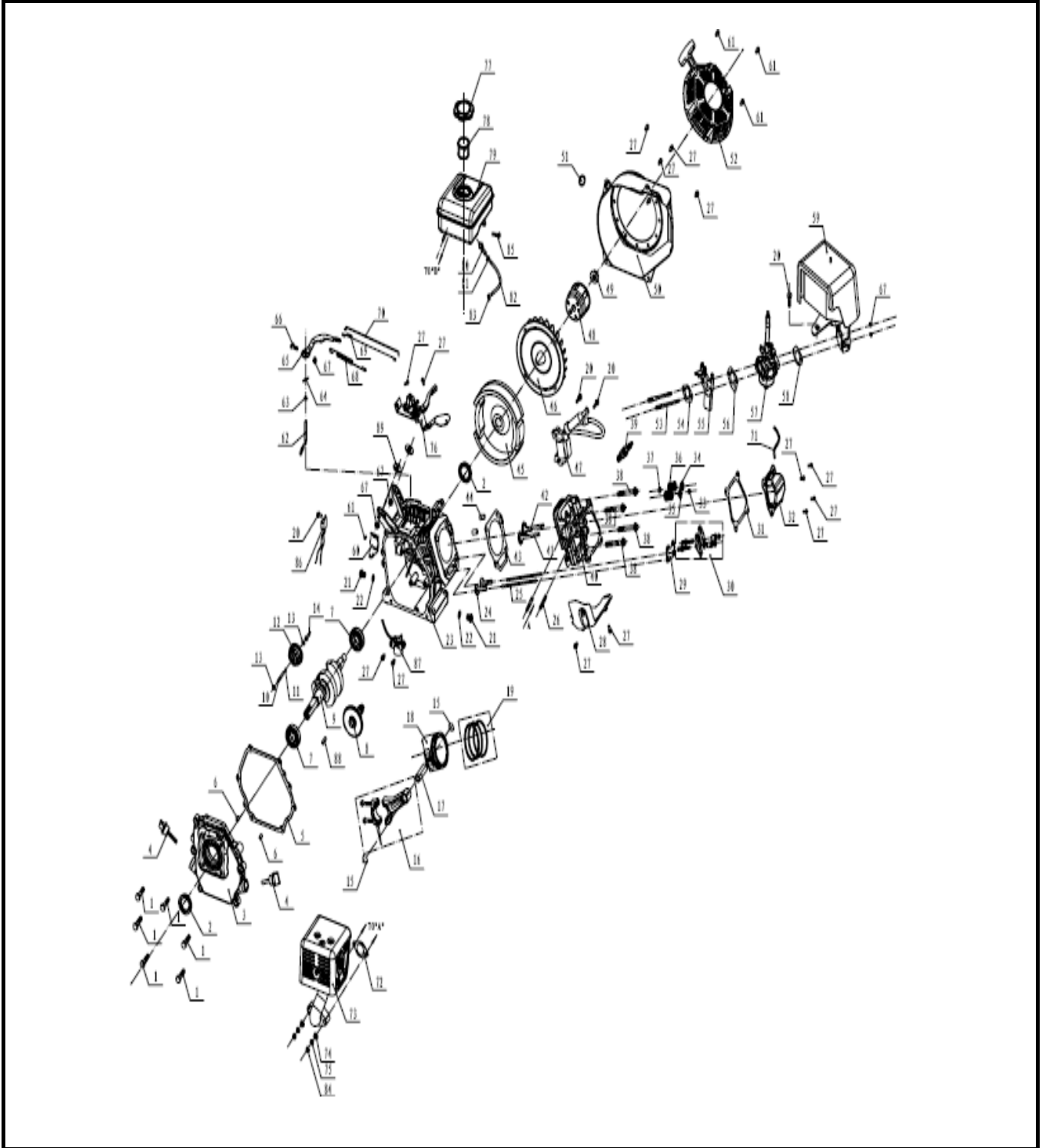


FUMIGADORA ESTACIONARIA A GASOLINA ACOPLE DIRECTO 25 L

Parte: MOTOR

Código 505966

Modelo XPS25SD



FUMIGADORA ESTACIONARIA A GASOLINA ACOPLE DIRECTO 25 L

Parte: MOTOR

Código 505966

Modelo XPS25SD

| N° | Cód. Savake | Descripción Español   | Descripción Ingles        | Cant. | Observaciones   |
|----|-------------|---|---------------------------|-------|---|
| 1  |             |   | Bolt M8X33.5              | 6     |   |
| 2  |             |   | Oil sealing B2541         | 1     |   |
| 3  | 384123      | TAPA CARTER DELANTERO P/<br>MOTOR 6.5HP (168F) 196CC              | Crankcase cover           | 1     |    |
| 4  |             |   | Oil dipstick              |       |   |
| 5  |             |   | crankcase gaskets         |       |   |
| 6  |             |   | pin 8X14                  | 2     |   |
| 7  |             |   | bearing 6205              | 2     |   |
| 8  | 384404      | ARBOL DE LEVAS P/ MOTOR 6.5HP<br>(168F) 196CC                     | cam shaft                 | 1     |    |
| 9  | 384388      | CIGÜEÑAL P/ MOTOR 6.5HP (168F)<br>196CC                           | crankshaft                | 1     |   |
| 10 |             |   | Speed governing shaft     | 1     |   |
| 11 |             |   | Snap ring                 | 1     |   |
| 12 | 384362      | ENGRANAJE DEL GOBERNADOR DE<br>RPM P/ MOTOR 6.5HP (168F)<br>196CC | Speed governing gear      | 1     |  |
| 13 |             |   | Speed swinging rod washer | 2     |   |
| 14 |             |   | Speed governing push dish | 1     |   |
| 15 |             |   | Piston pin circlip        | 2     |   |
| 16 | 384453      | BIELA P/ MOTOR 6.5HP (168F)<br>196CC                              | Connect rod assy          | 1     |  |
| 17 |             |   | Piston pin                | 1     |   |
| 18 | 384438      | PISTON COMPLETO P/ MOTOR 6HP<br>(168F) 196CC                      | Piston                    | 1     |  |

FUMIGADORA ESTACIONARIA A GASOLINA ACOPLE DIRECTO 25 L

Parte: MOTOR

Código 505966

Modelo XPS25SD

| N° | Cód. Savake | Descripción Español                            | Descripción Ingles         | Cant. | Observaciones   |
|----|-------------|--|----------------------------|-------|---|
| 19 | 384446      | ANILLOS DEL PISTON P/ MOTOR 6.5HP (168F) 196CC | Piston ring set            | 3     |    |
| 20 |             |  | Bolt M6X22                 | 4     |   |
| 21 |             |  | Oil drain bolt M10*15      | 2     |   |
| 22 |             |  | Oil drain bolt gaskets     | 2     |   |
| 23 | 384354      | BLOQUE P/ MOTOR 6.5HP (168F) 196CC             | crankcase                  | 1     |    |
| 24 |             |  | valve tappet               | 2     |   |
| 25 |             |  | valve lifter               | 2     |   |
| 26 |             |  | studs M8X34                | 2     |   |
| 27 |             |  | Bolt M6X12                 | 14    |   |
| 28 |             |  | Lead wind cover            | 1     |   |
| 29 |             |  | Push guide assy            | 1     |   |
| 30 |             |  | Valve rocket assy          | 2     |   |
| 31 |             |  | cylinder head cover gasket | 1     |   |
| 32 | 384164      | TAPA DE CILINDRO P/ MOTOR 6HP (168F) 196CC     | cylinder head cover        | 1     |  |
| 33 |             |  | Cap                        | 1     |   |
| 34 | 384420      | CAMARA COMPLETA P/ MOTOR 6.5HP (168F) 196CC    | Intake spring seat         | 1     |  |
| 35 |             |  | Exhaust spring seat        | 1     |   |
| 36 |             |  | valve spring               | 1     |   |
| 37 |             |  | Oil seal, pipe             | 1     |   |
| 38 |             |  | Bolt M8X60                 | 4     |   |
| 39 |             |  | spark plug                 | 1     |   |
| 40 |             |  | cylinder head              | 1     |   |
| 41 |             |  | inlet valve                | 1     |   |
| 42 |             |  | outlet valve               | 1     |   |
| 43 |             |  | cylinder head gaskets      | 1     |   |
| 38 |             |  |                            |       |   |
| 39 |             |  | spark plug                 | 1     |   |

FUMIGADORA ESTACIONARIA A GASOLINA ACOPLE DIRECTO 25 L

Parte: MOTOR

Código 505966

Modelo XPS25SD

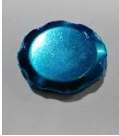

| N° | Cód. Savake | Descripción Español                                       | Descripción Ingles       | Cant. | Observaciones   |
|----|-------------|---|--------------------------|-------|---|
| 41 | 384222      | VALVULA DE ADMISION Y ESCAPE<br>P/ MOTOR 6HP (168F) 196CC | inlet valve              | 1     |    |
| 42 |             |   | outlet valve             | 1     |   |
| 43 |             |   | cylinder head gaskets    | 1     |   |
| 44 |             |   | pin10X16                 | 2     |   |
| 45 | 384347      | VOLANTE P/ MOTOR 6HP (168F)<br>196CC                      | Flywheel                 | 1     |    |
| 46 |             |   | Flywheel fan             | 1     |   |
| 47 | 384370      | BOBINA DE ENCENDIDO P/ MOTOR<br>6.5HP (168F) 196CC        | Ignition coil            | 1     |    |
| 48 |             |   | Starting flange          | 1     |   |
| 49 |             |   | Nut M14×1.5              | 1     |   |
| 50 |             |   | Wind hood                | 1     |   |
| 51 | 520189      | BOTON DE APAGADO P/ MOTOR<br>6.5HP (168F) 196CC           | Engine switch            | 1     |  |
| 52 | 384339      | ARRANQUE COMPLETO P/ MOTOR<br>6.5HP (168F) 196CC          | Recoil starter           | 1     |  |
| 53 |             |   | Bolt M6x112              | 2     |   |
| 54 |             |   | Inlet gasket             | 1     |   |
| 55 | 384487      | CARBURADOR P/ MOTOR 6.5HP<br>(168F) 196CC                 | carburator Cushion block | 1     |  |
| 56 |             |   | carburator gasket        | 1     |   |
| 57 |             |   | carburator               |       |   |
| 58 | 384479      | FILTRO DE AIRE P/ MOTOR 6.5HP<br>(168F) 196CC             | Air cleaner gasket       | 1     |  |
| 59 |             |   | Air cleaner              | 1     |   |
| 60 |             |   | Shroard comp.            | 1     |   |
| 61 |             |   | Bolt M6X8                | 4     |   |
| 62 |             |   | Speed swinging rod       | 1     |   |

FUMIGADORA ESTACIONARIA A GASOLINA ACOPLE DIRECTO 25 L

Parte: MOTOR

Código 505966

Modelo XPS25SD

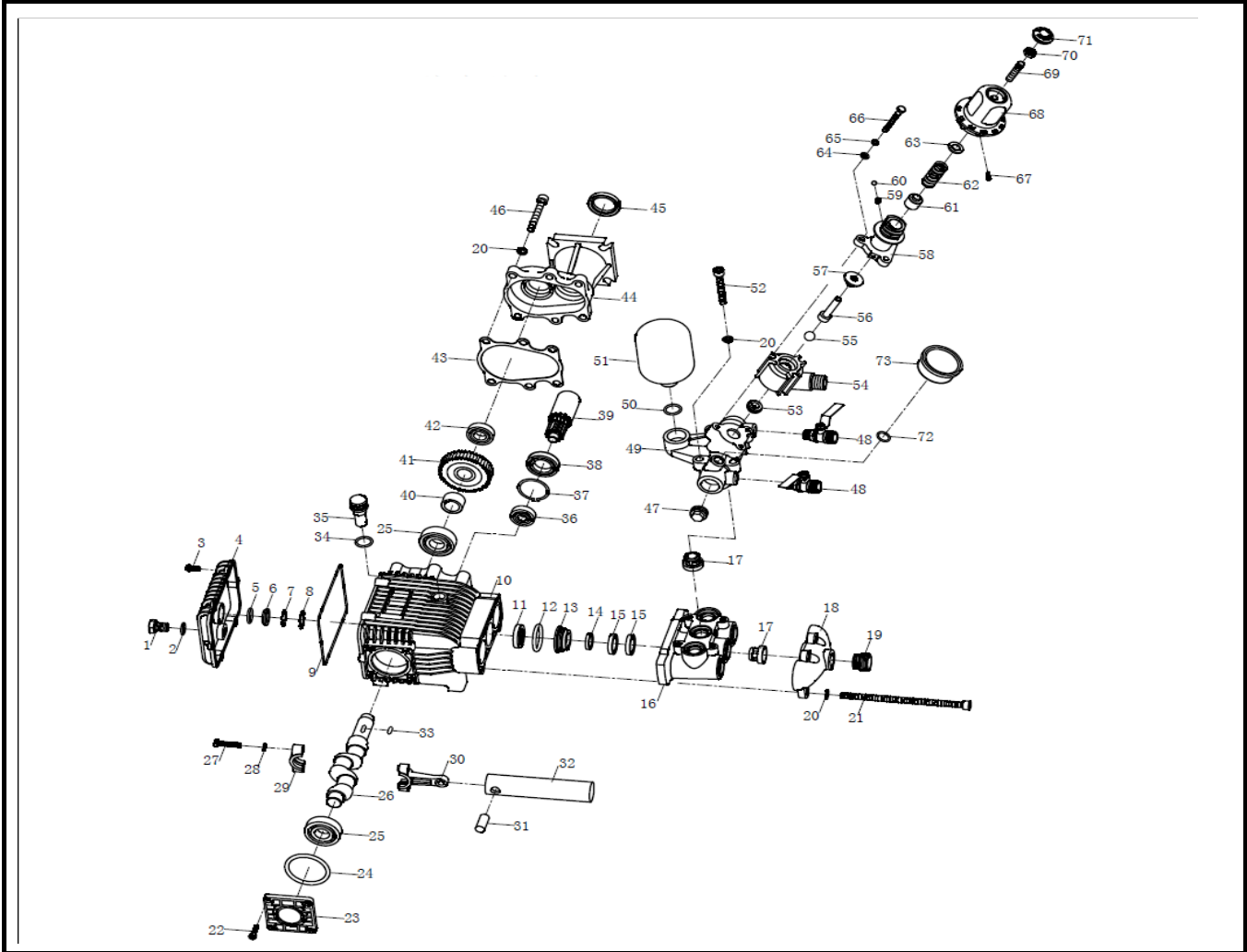
| N° | Cód. Savake | Descripción Español                                  | Descripción Ingles             | Cant. | Observaciones   |
|----|-------------|--|--------------------------------|-------|---|
| 63 |             |  | washer                         | 1     |   |
| 64 |             |  | Speed swinging rod lock clamps | 1     |   |
| 65 |             |  | Speed governing arm            | 1     |   |
| 66 |             |  | Lock bolt                      | 1     |   |
| 67 |             |  | nut M6                         | 5     |   |
| 68 |             |  | Speed governing spring         | 1     |   |
| 69 |             |  | throttle reset spring          | 1     |   |
| 70 |             |  | Speed governing pull rod       | 1     |   |
| 71 |             |  | Breathing tube                 | 1     |   |
| 72 |             |  | Muffler gasket                 | 1     |   |
| 73 | 384412      | SILENCIADOR P/ MOTOR 6HP (168F) 196CC                | Muffler                        | 1     |   |
| 74 |             |  | washer Ø8                      | 2     |   |
| 75 |             |  | spring washer Ø8               | 2     |   |
| 76 |             |  | Speed governing assy           | 1     |   |
| 77 | 384503      | TAPA TANQUE DE COMBUSTIBLE P/ MOTOR 6HP (168F) 196CC | Fuel tank cap                  | 1     |   |
| 78 |             |  | Filter cup                     | 1     |   |
| 79 | 520197      | TANQUE DE COMBUSTIBLE P/ MOTOR 6HP (168F) 196CC      | Fuel tank                      | 1     |  |
| 80 |             |  | Connector                      | 1     |   |
| 81 |             |  | clamp φ8                       | 1     |   |
| 82 |             |  | Fuel pipe                      | 1     |   |
| 83 |             |  | clamp φ7                       | 1     |   |
| 84 |             |  | Nut M8                         | 2     |   |
| 85 |             |  | Bolt M6X28                     | 1     |   |
| 86 |             |  | Sheet wizard valve             | 1     |   |
| 87 |             |  | low oil sensor                 | 1     |   |
| 88 |             |  | Key 4.76x4.8x45                | 1     |   |
| 89 |             |  | Shock absorption               | 2     |   |

FUMIGADORA ESTACIONARIA A GASOLINA ACOPLE DIRECTO 25 L

Parte: BOMBA

Código 505966

Modelo XPS25SD



FUMIGADORA ESTACIONARIA A GASOLINA ACOPLE DIRECTO 25 L

Parte: BOMBA

Código 505966

Modelo XPS25SD

| N°     | Cód. Savake | Descripción Español | Descripción Ingles    | Cant. | Observaciones |
|--------|-------------|---------------------|-----------------------|-------|---------------|
| 1      |             |                     | Plug Drain 12X10      | 1     |               |
| 2      |             |                     | O-Ring                | 1     |               |
| 3      |             |                     | Screw 6X14            | 6     |               |
| 4      |             |                     | Cover, Crank Case     | 1     |               |
| 5+6+7+ |             |                     | Oil Gauge with o-ring | 1     |               |
| 8      |             |                     |                       |       |               |
| 9      |             |                     | Gasket, Crank Case    | 1     |               |

|             |        |  |                                  |   |   |
|-------------|--------|--|----------------------------------|---|---|
| 10          | 539817 | CARCASA DE BOMBA P/XP25-D/XPS25SD        | Crank Case                       | 1 |   |
| 11          | 528588 | KIT DE EMPAQUES P/XP25-D/XPS25SD         | Oil Seal, Plunger 35x22x7        | 3 |    |
| 12          |        |  | O-Ring 29X2.6                    | 3 |   |
| 13          |        |  | Grand                            | 3 |   |
| 14          |        |  | adjusting ring                   | 3 |   |
| 15          |        |  | V packing                        | 6 |   |
| 16          |        |  | cylinder                         | 1 |   |
| 17          | 528570 | VALVULA INTERNA CHECK P/XP25-D/XPS25SD   | Valve Assy (stainless iron)      | 6 |    |
| 18          |        |  | suction metal                    | 1 |   |
| 19          |        |  | suction metal connector          | 1 |   |
| 20+21       |        |  | screw M8X110                     | 4 |   |
| 22          |        |  | screw M8X14                      | 4 |   |
| 23          |        |  | cover of crankshaft              | 1 |   |
| 24          |        |  | O ring 51X2.4                    | 1 |   |
| 25          |        |  | bearing 6204                     | 2 |   |
| 26          | 528612 | CIGÜEÑAL P/XP25-D/XPS25SD                | crankshaft                       | 1 |    |
| 27+28+29+30 | 528604 | BIELA P/XP25-D/XPS25SD                   | connecting rod                   | 3 |   |
| 31          | 542324 | PASADOR DEL EMBOLO P/XP25-D/XPS25SD      | plunger pin                      | 3 |  |
| 32          | 528596 | EMBOLO PISTON P/XP25-D/XPS25SD           | plunger surface with ceramic 115 | 3 |  |
| 33          |        |  | key 5X14                         | 1 |   |
| 34          |        |  | O ring                           | 1 |   |
| 35          |        |  | Plug                             | 1 |   |
| 36          | 528620 | CAJA REDUCTORA COMPLETA XP25-D / XPS25SD | bearing 6201                     | 1 |  |
| 37          |        |  | stopping ring for bearing        | 1 |   |
| 38          |        |  | bearing 61905                    | 1 |   |
| 39          |        |  | small gear                       | 1 |   |
| 40          |        |  | pipe                             | 1 |   |
| 41          |        |  | big gear                         | 1 |   |
| 42          |        |  | bearing 6103                     | 1 |   |
| 43          |        |  | gasket                           | 1 |   |
| 44          |        |  | crankcase seat                   | 1 |   |
| 45          |        |  | oil seal for gear                | 1 |   |

FUMIGADORA ESTACIONARIA A GASOLINA ACOPLE DIRECTO 25 L

Parte: BOMBA

Código 505966

Modelo XPS25SD

| N°           | Cód. Savake  | Descripción Español                             | Descripción Ingles     | Cant. | Observaciones   |
|--------------|--------------|---|------------------------|-------|---|
| 46           |              |   | screw M8X30            | 6     |   |
| 47           |              |   | Plug                   | 1     |   |
| 48           |              |   | cock                   | 2     |   |
| 49           |              |   | discharge metal        | 1     |   |
| 50           |              |   | O ring for air chamber | 1     |   |
| 51           | 528562       | CAMARA AIRE P/XP25-D/XPS25SD                    | air chamber            | 1     |  |
| 52           |              |   | screw M8X55            | 4     |   |
| 53           | 528554       | VALVULA REGULADORA COMPLETA<br>P/XP25-D/XPS25SD | valve seat             | 1     |   |
| 54           |              |   | overflow body          | 1     |   |
| 55           |              |   | steel ball             | 1     |   |
| 56           |              |   | pressure rod           | 1     |   |
| 57           |              |   | O ring                 | 1     |   |
| 58           |              |   | Spring box             | 1     |   |
| 59           |              |   | spring                 | 1     |   |
| 60           |              |   | steel ball             | 1     |   |
| 61           |              |   | Upper metal            | 1     |   |
| 62           |              |   | spring                 | 1     |   |
| 63           |              |   | Spring seat            | 1     |   |
| 64+65+<br>66 |              |   | screw complete M6X70   | 3     |   |
| 67           |              |   | screw                  | 2     |   |
| 68           |              |   | adjusting wheel        | 1     |   |
| 69           |              |   | screw                  | 1     |   |
| 70           | nut M8       | 1   |                        |       |   |
| 71           | rubber cover | 1   |                        |       |   |
| 72           |              |   | gasket                 | 1     |   |
| 73           |              |   | gauge                  | 1     |   |