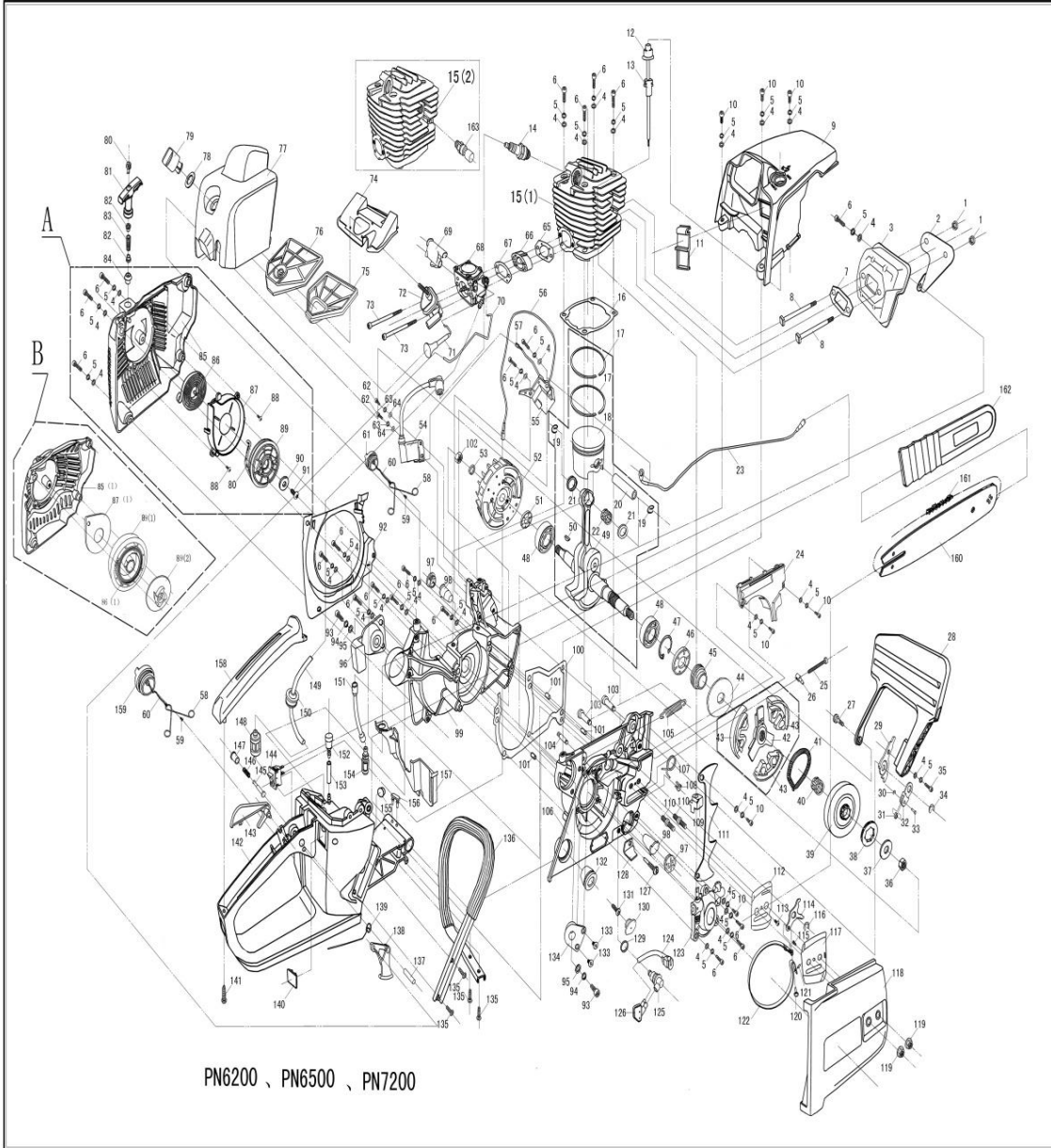


MOTOSIERRA 72 CC
MOTOSIERRA

Parte: _____

Código 489906

Modelo XCS72-I



MOTOSIERRA 72 CC

Parte: MOTOSIERRA

Código 489906

Modelo XCS72-I

N°	Cód. Savake	Descripción Español	Descripción Ingles	Cant.	Observaciones
24			COVER-SPRING	1	
25			SHAFT ADJUSTING	1	
26	537373	TENSOR DE CADENA P/XCS72-I	TOOTH-CHAIN ADJUSTING	1	
27			SCREW	1	
28			LEVER-CHAIN BRAKE	1	
29			PLATE-BRAKE	1	
30			RING-SNAP	1	
31			PIN	1	
32	537365	TAPA DEL FRENO COMPLETA P/XCS72-I	DRIVING POLE	1	
33			COVER-PIN	1	
114			PUSHER-SPRING(BARKE)	1	
115			SCREW	1	
116			RING-SNAP	2	
122			BAND BRAKE	1	
34			RING-SNAP	1	
35			SCREW	1	
36			MUT	1	
37			WASHER	1	
38	528026	ANILLO FLOTANTE P/XCS72-I	SPROKET	1	
39	491472	CAMPANA DE EMBRAGUE P/XCS72-I	DRUM-CLUTCH	1	
40	491423	RODAMIENTO DE AGUJA P/CAMPANA P/XCS72-I	NEEDLE BEARING-BALL	1	
41	491456	RESORTE DE EMBRAGUE P/XCS72-I	SPRING CLUTCH	1	
42			SUPPORT	1	
43			CLUTCH SUPPORT	3	
44			GASKET CLUTCH	1	
45	491282	SIN FIN DE LA BOMBA DE LUBRICACION P/XCS72-I	GEAR-WORM	1	
46			RIGHT SEAL OIL	1	

Parte: MOTOSIERRA

Código 489906

Modelo XCS72-I

N°	Cód. Savake	Descripción Español	Descripción Ingles	Cant.	Observaciones
47	491449	ZAPATA DE EMBRAGUE P/XCS72-I	SNAP RING	1	
48			BEARING	2	
49	491464	CIGUENAL CON BIELA P/XCS72-I	CRANK SHAFT ASSY	1	
50			KEY-FLYWHEEL	1	
51			LEFT SEAL OIL	1	
52			FLY WHEEL	1	
53			WASHER	1	
54			LOOP	1	
55	491266	BOBINA DE ENCENDIDO P/XCS72-I	IGNITION	1	
56			WIRE-SWITCH	1	
57			MUTUAL-CONNECT WIRE	1	
58			AGAINST-DROP BOARD	2	
59			SCREW	2	
60			CHAIN	2	
61			COVER-FUEL OIL	1	
62			SCREW	2	
63			WASHER	2	
64			WASHER	2	
65	537399	INSULADOR P/XCS72-I	GASKET-INTAKE	1	
66			BOOT-INTAKE	1	
67			GASKET-CARBURETOR	1	
68	491308	CARBURADOR P/XCS72-I	CARBURETOR	1	
69			GROMMET-OUTER	1	
70			ROD-THROTTLE	1	
71			CHOKE KNOB	1	
72			GROMMET-INNER	1	
73			SCREW	2	
74			AIR FILTER-A	1	
75			AIR FILTER	1	
76			COVER-AIR FILTER	1	
77			COVER-AIR FILTER	1	
78			WASHER-KNOB	1	

MOTOSIERRA 72 CC

Parte: MOTOSIERRA

Código 489906

Modelo XCS72-I

N°	Cód. Savake	Descripción Español	Descripción Ingles	Cant.	Observaciones
79			KNOB-AIR FILTER	1	
80			ROPE	1	
81			HANDLE-ATARTER	1	
82			GROMMET-SPRING	2	
83			RECOLL SPRING	1	
84			GUIDE BUSH-ROPE	1	
85			HOUSING-OUTER	1	
85(1)			HOUSING-OUTER	1	
86			SPRING-STARTER	1	
86(1)			POWER STORAGE SPRING	1	
87			SPRING-STARTER WITH CASE	1	
87(1)			SPRING-STARTER WITH CASE	1	
88			SCREW	2	
89			PULLEY-STARTER	1	
89(1)			ROPE ROTOR	1	
89(2)			PULLEY-STARTER	1	
90			GASKET	1	
91			SCREW	1	
92			BAFFLE-FAN	1	
93			SCREW	2	
94			WASHER	2	
95			WASHER	2	
96			PAD-RUBBER CUSHIONING(LEFT)	1	
97			PLUG-PAD	2	
98			PAD-RUBBER (LONG)	2	
99			LEFT-CRANK CASE ASSY	1	
100			GASKET-CRANK CASE	1	
101			PIN-CRANK CASE	3	
102			PIN-BRAKE	1	
103			PIN-BRAKE	1	
104			PIN-SPRING	1	
105			SPRING	1	
106			RIGHT-CRANK CASE	1	
107			SPRING	1	
108			GROMMET-PIN	1	
109			ORIENTATION BOARD	1	
110			BOLT	2	
111			BOARD	1	
112			SHIELD-OIL OUTLET	1	
113			SCREW	1	
114			PUSHER-SPRING(BARKE)	1	
115			SCREW	1	
116			RING-SNAP	2	

MOTOSIERRA 72 CC

Parte: MOTOSIERRA

Código 489906

Modelo XCS72-I

N°	Cód. Savake	Descripción Español	Descripción Ingles	Cant.	Observaciones
117			PLATE-BAR	1	
118			BRAKE HOUSING ASSY	1	
119			NUT	2	
120			SCREW	1	
121			COLUMN PIN	1	
122			BAND BRAKE	1	
123	491365	BOMBA DE ACEITE P/XCS72-I	OIL PUMP	1	
124			OIL OUTLET	1	
125			CONNECTOR-OIL INLET	1	
126			CONNECTOR-OIL OUTLET	1	
127			SCREW	1	
128			CHAIN CATCHER	1	
129			O RING	1	
130			PLUG-PAD	1	
131			SCREW	1	
132	491373	KIT DE DAMPER P/XCS72-I	PAD-RUBBER	1	
133			SCREW	2	
134			RIGHT PAD-RUBBER	1	
135			SCREW	4	
136			HANDLE	1	
137			COLUMN PIN	1	
138			TRIGGER	1	
139			SPRING-TRIGGER	1	
140			PAD-CRAFT	1	
141			SCREW	1	
142	521658	TANQUE DE COMBUSTIBLE P/XCS72-I	GASOLINE TANK	1	
143			LEVER-SAFETY TRIGGER	1	
144			SWITCH	1	
145			PIN-BUTTON	1	
146			COMPRESS SPRING-BUTTON	1	
147			AUTO-KEY BUTTON	1	
148	491290	FILTRO DE COMBUSTIBLE P/XCS72-I	OIL-FILTER	1	
149	550558	MANGUERA DE COMBUSTIBLE P/XCS72-	HOSE OIL	1	
150		I	SUPPORT-HOSE OIL	1	

MOTOSIERRA 72 CC

Parte: MOTOSIERRA

Código 489906

Modelo XCS72-I

N°	Cód. Savake	Descripción Español	Descripción Ingles	Cant.	Observaciones
151	537381	MANGUERA Y FILTRO ACEITE P/ CADENA P/XCS72-I	HOSE OIL	1	
154			OIL-FILTER	1	
152			BALANCE APPLIANCE	1	
153			HOSE-BALANCE	1	
154			OIL-FILTER	1	
155			PAD-RUBBER	1	
156			BUMPER	1	
157			SUPPORT CARBURETOR	1	
158			COVER-REAR HANDLE	1	
159			COVER-FUEL OIL	1	
160			GUIDE BAR	1	
161			CHAIN SAW	1	
161			CHAIN SAW	1	
162			COVER-GUIDE BAR	1	
163			DESCOMPRESION VALVE	1	
	550566	PIÑON DE LA BOMBA P/XCS72-I	OIL PUMP GEAR	2	
	550574	PLATINA BOMBA P/XCS72-I	PUMP PLATE	1	