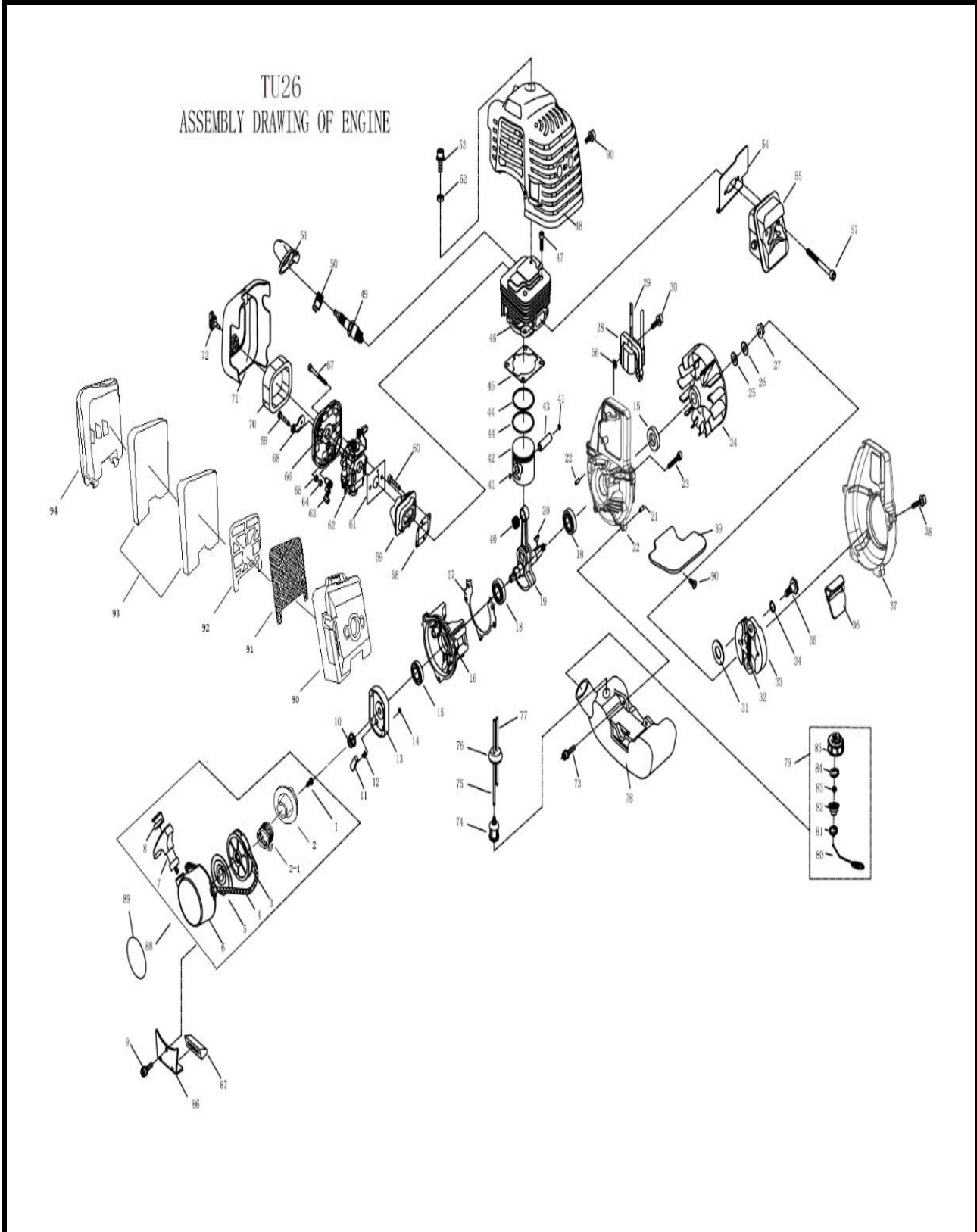


FUMIGADORA PORTATIL 26 cc Baña Ganado

Parte: MOTOR

Código 489617

Modelo XS600



FUMIGADORA PORTATIL 26 cc Baña Ganado

Parte: MOTOR

Código 489617

Modelo XS600

N°	Cód. Savake	Descripción Español	Descripción Ingles	Cant.	Observaciones
1	480186	TORNILLO CENTRAL P/TF900-A/XKS25L/ZKS25L/XS600/XS600	Screw m5x12		
2	492215	POLEA INTERIOR DE ARRANQUE P/TF900-A/XKS25L/ZKS25L/XS600	Wheel claw		
2-1			Spring		
3	492207	POLEA DE ARRANQUE P/TF900-A/XKS25L/ZKS25L/XS600	Starter whell		
4			Roper		
5	492199	RESORTE DE ARRANQUE P/TF900-A/XKS25L/ZKS25L/XS600	Recoil spring		
6	473884	CARCAZA DE ARRANQUE P/TF900-A/XKS25L/ZKS25L/XS600	Starter cover ass'y		
7	474213	MANIJA ARRANQUE P/TF900-A/XKS25L/ZKS25L/XS600	Starter handle		
8			No need		
9			No need		
10			No need		
11	492074	UÑA P/TF900-A/XKS25L/ZKS25L/XS600	Start claw		
12	492082	RESORTE DE TRINQUETE P/TF900-A/XKS25L/ZKS25L/XS600	Start spring		
11+12+13+14	492090	TRINQUETE COMPLETO P/TF900-A/XKS25L/ZKS25L/XS600	Start reel		
14			Stop ring 4		
15	492058	SELLO ACEITE CIGÜEÑAL P/TF900-A/XKS25L/ZKS25L/XS600	Oil - seal		
16			Crankcase back		
17	473967	EMPAQUE DEL CARTER P/TF900-A/XKS25L/ZKS25L/XS600	Gasket of crankcase		
18			Bearing 6001/p5		

FUMIGADORA PORTATIL 26 cc Baña Ganado

Parte: MOTOR

Código 489617

Modelo XS600

N°	Cód. Savake	Descripción Español	Descripción Ingles	Cant.	Observaciones
19	491621	CIGÜEÑAL P/TF900-A/XKS25L/ZKS25L/XS600	Crankshaft		
20	465997	LLAVE DEL CIGUENAL P/TF900-A/XKS25L/ZKS25L/XS600	Key 3x5x12		
21			Pin b4 x 10		
22	450205	CARTER P/TF900-A/XKS25L/ZKS25L/XS600	Crankcase front		
37			Fan cover		
23			Screw m5 x 25		
24	472118	VOLANTE MANEGTO P/TF900-A/XKS25L/ZKS25L/XS600	Magneto rotor comp		
25			No need		
26			No need		
27			Nut m8		
28	492033	BOBINA ENCENDIDO P/TF900-A/XKS25L/ZKS25L/XS600	Ignition coil comp.		
29			No need		
30			Screw m5x20		
31	404491	ARANDELA EMBRAGUE P/TF900-A/XKS25L/ZKS25L/XS600	Washer		
32	474320	RESORTE EMBRAGUE P/TF900-A/XKS25L/ZKS25L/XS600	Expander spring		
32	492124	EMBRAGUE COMPLETO P/TF900-A/XKS25L/ZKS25L/XS600	Expander spring		
33			Expander complete		
34			Washer		
35			Screw pin		
34	474908	ARANDELA DE EMBRAGUE P/TF900-A/XKS25L/ZKS25L/XS600	Washer		
35			Screw pin		
36			Plate		
37			Fan cover		
38			Bolt m5 x 20		

FUMIGADORA PORTATIL 26 cc Baña Ganado

Parte: MOTOR

Código 489617

Modelo XS600

N°	Cód. Savake	Descripción Español	Descripción Ingles	Cant.	Observaciones
39			Plate		
40	404111	PISTON COMPLETO MOTOR P/TF900-A/XKS25L/ZKS25L/XS600	Bearing		
42			Piston		
43			Piston pin		
44			Piston ring		
40	473850	RODAMIENTO AGUJAS P/TF900-A/XKS25L/ZKS25L/XS600	Bearing		
41	491605	CLIP P/TF900-A/XKS25L/ZKS25L/XS600	Ring		
42	491589	PISTON P/TF900-A/XKS25L/ZKS25L/XS600	Piston		
43	491597	PISTON P/TF900-A/XKS25L/ZKS25L/XS601	Piston pin		
44	491571	PISTON P/TF900-A/XKS25L/ZKS25L/XS602	Piston ring	2	
45	491563	EMPAQUE DEL CILINDRO P/TF900-A/XKS25L/ZKS25L/XS600	Gasket of cylinder		
46	491548	CILINDRO P/TF900-A/XKS25L/ZKS25L/XS600	Cylinder		
47			Screw for cylinder		
48	474437	TAPA PROTECTORA MOTOR P/TF900-A/XKS25L/ZKS25L/XS600	Guide cover assy		
49			Spark plug		
50			Spring		
51	473868	CAPUCHON BUJIA P/TF900-A/XKS25L/ZKS25L/XS600	Cover of spark plug		
52+53			Screw m5x16		
54	474015	EMPAQUE SILENCIADOR P/TF900-A/XKS25L/ZKS25L/XS600	Gasket		
55	474064	SILENCIADOR P/TF900-A/XKS25L/ZKS25L/XS600	Muffler		
56			No need		

FUMIGADORA PORTATIL 26 cc Baña Ganado

Parte: MOTOR

Código 489617

Modelo XS600

N°	Cód. Savake	Descripción Español	Descripción Ingles	Cant.	Observaciones
57			Bolt M5X45		
58	474833	EMPAQUE DEL INSULADOR P/TF900-A/XKS25L/ZKS25L/XS600	Gasket of admitting pipe		
59	474163	INSULADOR P/TF900-A/XKS25L/ZKS25L/XS600	Admitting pipe		
60	404475	TORNILLO SUJETADOR DE CARBURADOR P/TF900-A/XKS25L/ZKS25L/XS600	Screw m5x25		
61	480178	EMPAQUE DEL CARBURADOR P/TF900-A/XKS25L/ZKS25L/XS600	Gasket of carburetor		
62	492157	CARBURADOR P/TF900-A/XKS25L/ZKS25L/XS600	Carburetor(ruixin h119-00-135)		
66+68+			Inside cover of air cleaning		
66	473900	CARCAZA FILTRO AIRE P/TF900-A/XKS25L/ZKS25L/XS600	Inside cover of air cleaning		
67			Screw m5x60		
68	474262	PALANCA CHOKE P/TF900-A/XKS25L/ZKS25L/XS600			
70			Fan		
71	474429	TAPA FILTRO DE AIRE P/TF900-A/XKS25L/ZKS25L/XS600	Outside cover of air cleaning		
72	474478	TORNILLO TAPA FILTRO DE AIRE P/TF900-A/XKS25L/ZKS25L/XS600	Screw for air cleaning		
73	474460	TORNILLO AJUSTE BASE TANQ COMB P/TF900-A/XKS25L/ZKS25L/XS600	Screw for fuel tank		
74	474080	FILTRO DE COMBUSTIBLE P/TF900-A/XKS25L/ZKS25L/XS600	Fuel pipe filter		
75	482000	MANGUERA DE SUCCION COMBUSTIBLE P/TF900-A/XKS25L/ZKS25L/XS600	Fuel pipe(suction)		

FUMIGADORA PORTATIL 26 cc Baña Ganado

Parte: MOTOR

Código 489617

Modelo XS600

N°	Cód. Savake	Descripción Español	Descripción Ingles	Cant.	Observaciones
76	473991	EMPAQUE MANGUERA COMBUSTIBLE P/TF900-A/XKS25L/ZKS25L/XS600/XS600	Fuel plug		
77	474189	MANGUERA DE RETORNO COMBUSTIBLE P/TF900-A/XKS25L/ZKS25L/XS600	Fuel pipe(overflow)		
78	474403	TANQUE DE COMBUSTIBLE P/TF900-A/XKS25L/ZKS25L/XS600	Fuel tank		
78	492116	TANQUE DE COMBUSTIBLE CON ACC P/TF900-A/XKS25L/ZKS25L/XS600	Fuel tank		
79			Fuel tank cover		
81	474031	EMPAQUE TAPA COMBUSTIBLE P/TF900-A/XKS25L/ZKS25L/XS600	FUEL CAP GASKET		
86			NO HAVE		
87			NO HAVE		
88	492108	ARRANQUE COMPLETO P/TF900-A/XKS25L/ZKS25L/XS600	STARTER COMPLETE		
89			STARTER LABEL		
90-94			AIR CLEANER ANOTHER TYPE, YOUR TY		
58-72			AIR CLEANER NORMAL TYPE , your type		
91	492165	ELEMENTO FILTRO DE AIRE P/TF900-A/XKS25L/ZKS25L/XS600			
58-72	491555	FILTRO DE AIRE P/TF900-A/XKS25L/ZKS25L/XS600	AIR CLEANER NORMAL TYPE , your type is this one		

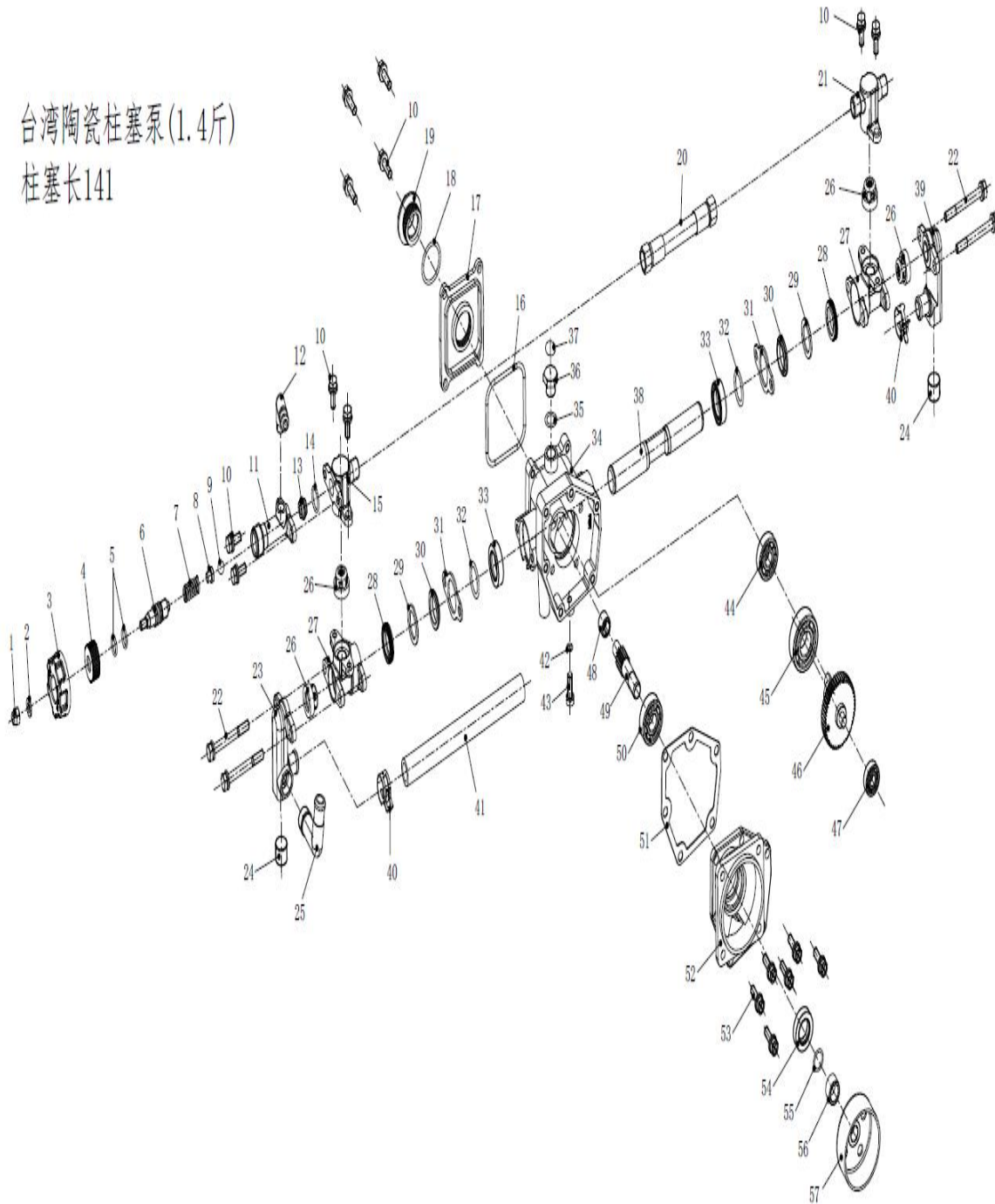
FUMIGADORA PORTATIL 26 cc Baña Ganado

Parte: BOMBA

Código 489617

Modelo XS600

台湾陶瓷柱塞泵(1.4斤)
柱塞长141



FUMIGADORA PORTATIL 26 cc Baña Ganado

Parte: BOMBA

Código 489617

Modelo XS600

N°	Cód. Savake	Descripción Español	Descripción Ingles	Cant.	Observaciones
1			Nut		
2			washer		
3			pressure adjusting wheel		
4			Nut brass		
5			O ring 13X1.9		
6			Pressure valve rod		
7			spring		
8			spring seat		
9			Valve ball		
10			screw M6X14		
11			pressure valve case		
12			overflow connector brass		
13			Valve seat		
14			O ring 14X1.9		
15			outlet chamber single		
16			O ring 60X3.5		
17			cover of crankcase		
18			O ring 30X22.5		
19			oil glass		
20			outlet pressure hose		
21			outlet chamber double		
22			bolt		
23			suction metal double		
24			plug nylon		
25			suction connetor brass		
26			valve assy		
27			cylinder without hole		
28			packing seat brass		
29			seal		
29-1			seal		
30			grand		
31			fixed plate		
32			O ring 22X2.4		
33			oil seal 18X28X8		
34			crankcase		
35			O ring 15X1.9		
36			screw for add oil		
37			label		
38			plunger		
39			suction metal single		
40			clip		
41			hose black		
42			O ring 9X1.9		

FUMIGADORA PORTATIL 26 cc Baña Ganado

Parte: BOMBACódigo 489617Modelo XS600

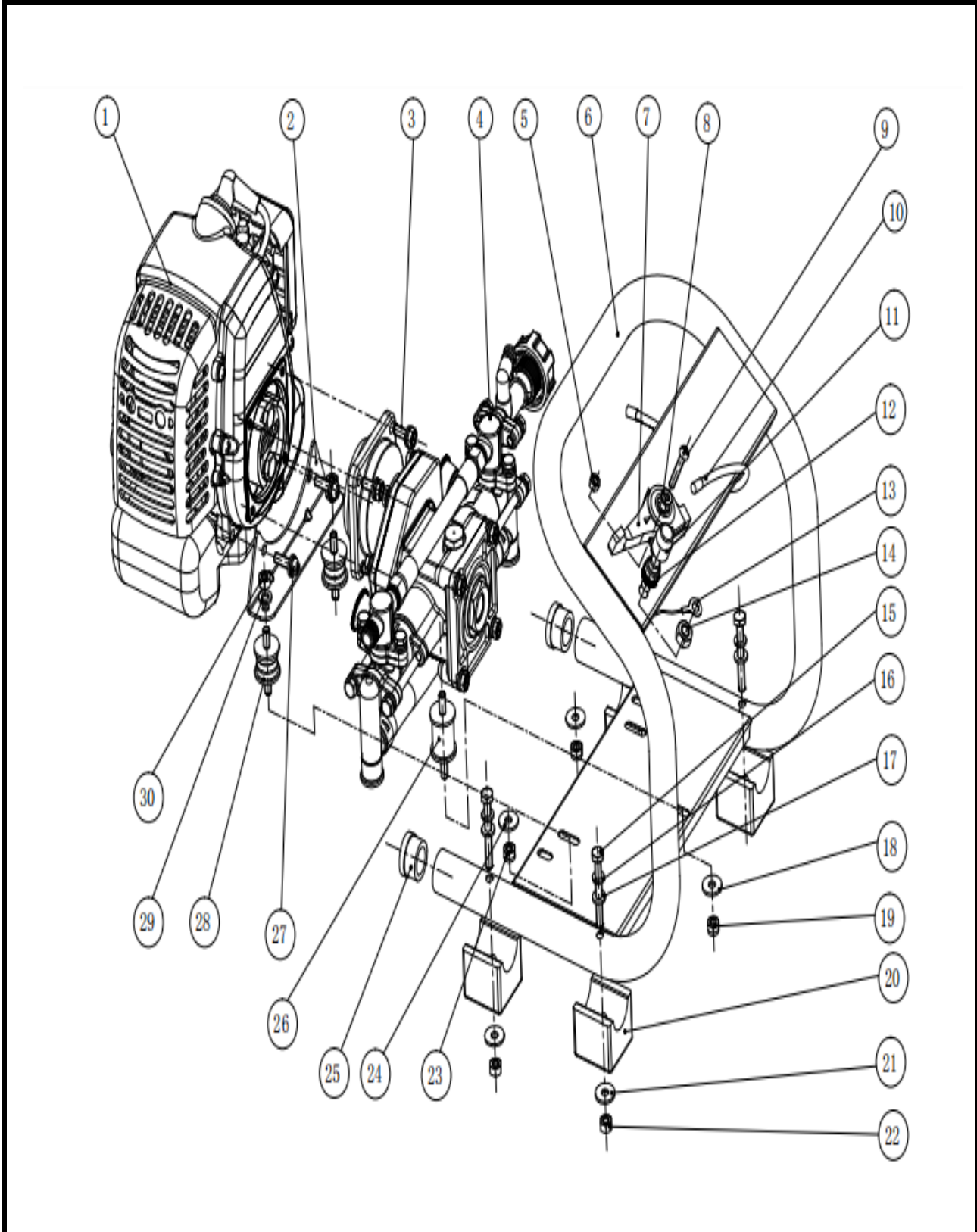
N°	Cód. Savake	Descripción Español	Descripción Ingles	Cant.	Observaciones
43			screw for take off oil		
44			bearing 6200		
45			bearing 6203		
46			gear		
47			bearing 608		
48			bearing		
49			gear shaft		
50			bearing 6201		
51			gasket		
52			drum case		
53			bolt M6X16		
54			Oil seal 17X28X8		
55			O ring 15X1.9		
56			Pipe		
57			clutch drum for 2 stroke		

FUMIGADORA PORTATIL 26 cc Baña Ganado

Parte: FUMIGADORA

Código 489617

Modelo XS600





FUMIGADORA PORTATIL 26 cc Baña Ganado

Parte: FUMIGADORA

Código 489617

Modelo XS600

N°	Cód. Savake	Descripción Español	Descripción Ingles	Cant.	Observaciones
1	482158	MOTOR GASOLINA P/TF900-A/XKS25L/ZKS25L	FST TU26 engine with fuel tank		
2			engine stand		
3			screw M5X14 of engine		
4	518050	BOMBA LIBRE MANTENIMIENTO P/ZKS25L/XS600	heavy brass TW free oil for 2 stroke		
5			screw nut for Flex accelerator		
6			frame complete		
7			Flex accelerator		
8			washer		
9			screw M5X30		
10			Cable comp		
11			cap for Cord comp		
12			Cord comp		
13			line		
14			nut		
15+16+			screw for frame		
17					
18			NO HAVE		
19			nut for joint		
20			feet		
21			NO HAVE		
22			nut		
23			nut		
24			NO HAVE		
25			plug		
26	450775	AMORTIGUADOR SOPORTE MOTOR P/TF900-A/XKS25L/ZKS25L/XS600	Joint-L		
27			screw for engine stand		
28	512772	AMORTIGUADOR SOPORTE BOMBA P/TF900-A/XKS25L/ZKS25L/XS600	Joint-S		
29			NO HAVE		
30			nut		