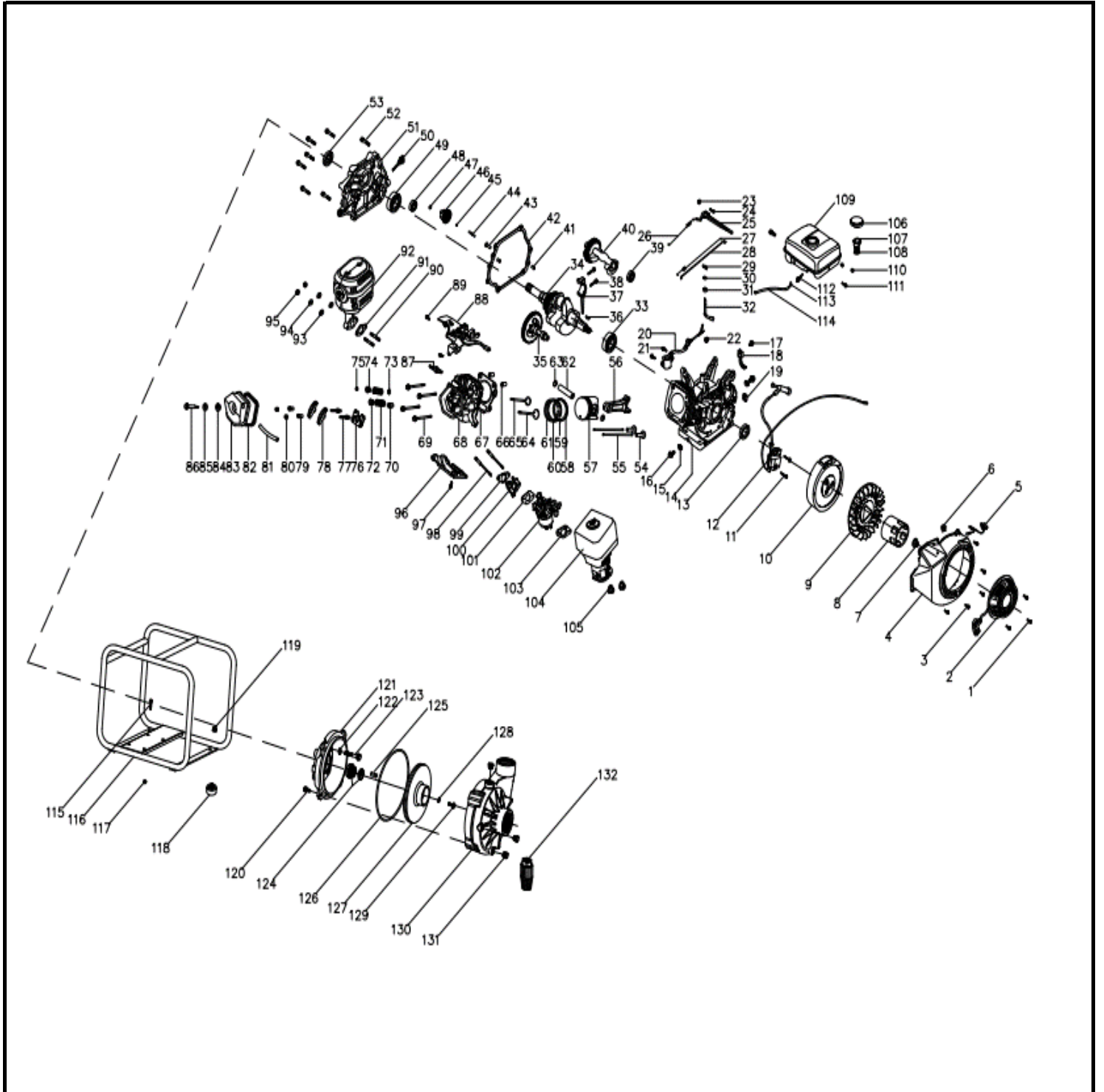


MOTOBOMBA A GASOLINA ALTA PRESIÓN 3"X3"

Parte: MOTOBOMBA

Código 473140

Modelo XGWP3C



MOTOBOMBA A GASOLINA ALTA PRESIÓN 3"X3"

Parte: MOTOBOMBA

Código 473140

Modelo XGWP3C

N°	Cód. Savake	Descripción Español	Descripción Ingles	Cant.	Observaciones
1	0		bolt	3	
2	393090	ARRANQUE COMPLETO P/XGG6000E/XGG8000E/XGE13K	starter	1	
3	0		bolt	5	
4	0		starter comp	1	
5	0		switch	1	
6	0		cable clip	1	
7	0		nut	1	
8	0		starter cup	1	
9	0		fan	1	
10	393082	VOLANTE P/XGE13K	flywheel	1	
11	0		bolt	2	
12	393066	BOBINA DE ENCENDIDO P/ XGG6000E,XGG8000E	ignition	1	
13	0		oil seal	1	
14	0		crankcase	1	
15	392852	EMPACADURA DEL CARTER P/XGG6000E/XGG8000E	gasket	2	
16	0		bolt	2	
17	0		bolt	1	
18	0		separator	1	
19	0		rubber cable cover	1	
20	393157	SENSOR DE ACEITE P/XGG6000E/XGG8000E/XGE13K	oil alert	1	
21	0		bolt	2	
22	0		nut	1	
23	0		nut	1	
24	0		bolt	1	
25	0		rpm arm	1	
26	0		rpm spring	1	
27	0		back up spring	1	
28	0		rpm gun	1	

MOTOBOMBA A GASOLINA ALTA PRESIÓN 3"X3"

Parte: MOTOBOMBA

Código 473140

Modelo XGWP3C





N°	Cód. Savake	Descripción Español	Descripción Ingles	Cant.	Observaciones
29	0		spring pin	1	
30	0		gasket	1	
31	0		oil seal	1	
32	0		rpm gear gun	1	
33	0		bearing	1	
34	392845	CIGÜEÑAL P/XGE13K	crankshaft	1	
35	392795	ARBOL DE LEVAS P/XGG6000E/XGE13K	camshaft	1	
36	0		key	1	
37	0		connect rod cover	1	
38	0		bolt	2	
39	0		bearing	1	
40	0		balance shaft	1	
41	0		pin	2	
42	0		crankcase gasket	1	
43	0		cover	1	
44	0		block ring 6	1	
45	0		rpm gear pin	1	
46	392860	GOBERNADOR DE VELOCIDAD XGG6000E, XGG800	rpm gear	1	
47	0		gasket ring	1	
48	0		bearing	1	
49	0		bearing	1	
50	0		oil plug	2	
51	393058	TAPA TRASERA DEL CARTER P/XGE13K	crankcase cover	1	
52	0		bolt	7	
53	0		oil seal	1	
54	393215	BALANCIN Y TAQUETES P/XGG6000E, XGG8000E	stud	2	
55			push rod	2	

MOTOBOMBA A GASOLINA ALTA PRESIÓN 3"X3"

Parte: MOTOBOMBA

Código 473140

Modelo XGWP3C




N°	Cód. Savake	Descripción Español	Descripción Ingles	Cant.	Observaciones
56	392746	BIELA COMPLETA P/XGG6000E/XGG8000E/XGE13K	connect rod	1	
57	392712	PISTON COMPLETO P/XGG6000E/XGG8000E/XGE13K	piston	1	
58	392696	ANILLOS DEL PISTON P/XGG6000E/XGE13K	Rings	1	
59			Sheet Ring	2	
60			Second Air Ring	1	
61			First Air Ring	1	
62	0		piston pin	1	
63	0		piston pin block ring	2	
64	392621	CAMARA COMPLETA P/XGG6000E/XGE13K/XGG8000E	intake valve	1	
65			exhaust valve	1	
66			pin	2	
67			cylinder head gasket	1	
68			cylinder head	1	
69			bolt	4	
70			oil seal	1	
71			valve spring	2	
72			intake valve spring base ring	1	
73			intake valve spring base	2	
74			exhaust valve spring base ring	1	
75			top cover	1	
76			guide board	1	
77			bolt	2	
78			rocker	2	
79			nut	2	
80			nut	2	
81			breath pipe	1	
82	cylinder head cover gasket	1			
83	cylinder head cover	1			
68	392787	CILINDRO P/ MOTOR P/XGE13K	Cylinder head	1	
84	0		seal	1	
85	0		metal seal	1	
86	0		bolt	1	
87	0		spark plug	1	
88	0		rpm base	1	
89	0		bolt	2	
90	0		bolt	2	
91	0		muffler gasket	1	
92	392613	SILENCIADOR COMPLETO P/XGE13K	muffler	1	
93	0		gasket ring 8	2	
94	0		spring gasket 8	2	
95	0		nut	2	

MOTOBOMBA A GASOLINA ALTA PRESIÓN 3"X3"

Parte: MOTOBOMBA

Código 473140

Modelo XGWP3C


N°	Cód. Savake	Descripción Español	Descripción Ingles	Cant.	Observaciones
96	0		side cover	1	
97	0		bolt	1	
98	0		bolt	2	
99	0		board gasket	1	
100	0		board	1	
101	392670	CARBURADOR P/XGE13K	carburator	1	
102	393132	SEPARADOR DEL CARBURADOR P/XGG6000E, XGG8000E/XGE13K	carburator gasket	1	
102	393207	KIT DE EMPACADURAS P/XGG6000E / XGG8000E	carburator gasket	1	
64			intake valve	1	
65			exhaust valve	1	
103	0		metal gasket	1	
104	0		air filter	1	
105	0		nut	2	
106	0		fuel tank cap	1	
107	0		filter cup	1	
108	0		fuel filter	1	
109	393181	TANQUE DE COMBUSTIBLE P/XGE13K	fuel tank	1	
110	0		nut	2	
111	0		bolt	2	
112	0		connector	1	
113	0		fuel pipe clip	2	
114	0		fuel pipe	1	
115	0		bolt	4	
116	0		frame	1	
117	0		nut	4	
118	0		rubber feet	4	
119	0		nut	4	
120	0		bolt	4	
121	0		pump cover	1	
122	0		gasket	4	
123	0		bolt	4	
124	0		mechanical seal	1	
125	0		key	1	
126	0		o ring	1	
127	0		impeller	1	
128	0		gasket	1	
129	0		bolt	1	
130	0		pump body	1	

MOTOBOMBA A GASOLINA ALTA PRESIÓN 3"X3"

Parte: MOTOBOMBA

Código 473140

Modelo XGWP3C

N°	Cód. Savake	Descripción Español	Descripción Ingles	Cant.	Observaciones
131	0		plug	3	
132	0		bottom valve	1	
64	393231	KIT VALVULAS ADMISION, ESCAPE, PLATILLOS Y RESORTES P/ XGG6000	intake valve	1	
65			exhaust valve	1	
69			bolt	4	
71			valve spring	2	
72			intake valve spring base ring	1	
73			intake valve spring base	2	
74			exhaust valve spring base ring	1	