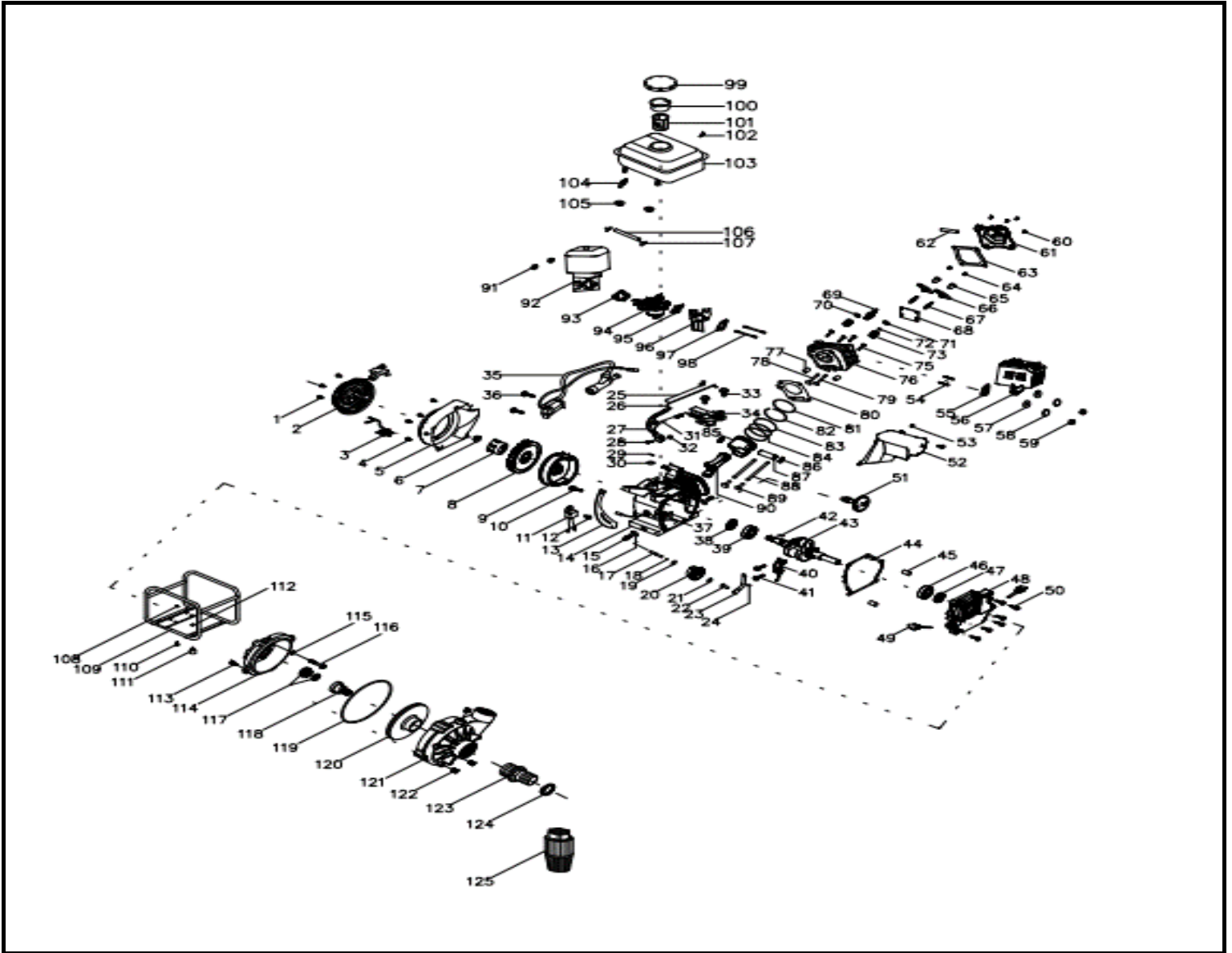


MOTOBOMBA A GASOLINA ALTA PRESION 1,5" X 1,5" HIERRO

Parte: MOTOBOMBA

Código 473116

Modelo XGWP15C




MOTOBOMBA A GASOLINA ALTA PRESION 1,5" X 1,5" HIERRO

Parte: MOTOBOMBA

Código 473116

Modelo XGWP15C

N°	Cód. Savake	Descripción Español	Descripción Ingles	Cant.	Observaciones
1			Hexagon flange bolt M6x7	3	
2	384339	ARRANQUE COMPLETO P/ MOTOR 6.5HP (168F) 196CC	starter	1	

MOTOBOMBA A GASOLINA ALTA PRESION 1,5" X 1,5" HIERRO

Parte: MOTOBOMBA

Código 473116

Modelo XGWP15C

N°	Cód. Savake	Descripción Español	Descripción Ingles	Cant.	Observaciones
3	520189	BOTON DE APAGADO P/ MOTOR 6.5HP (168F) 196CC	engine switch	1	
4			Hexagon flange bolt M6×12	4	
5			starter comp	1	
6			Hexagon flange nut M14×15	1	
7			starter cup	1	
8			fan	1	
9	384347	VOLANTE P/ MOTOR 6HP (168F) 196CC	flywheel	1	
10			Hexagon flange bolt M6×16	1	
11			separator	1	
12			Hexagon flange bolt M6×12	1	
13			flywheel cover	1	
14	384354	BLOQUE P/ MOTOR 6.5HP (168F) 196CC	crankcase	1	
15			bolt M10×12	2	
16			gasket ring 10×16×1	2	
17			rpm gear shaft	1	
18			block ring 6	1	
19			rpm gear gasket 6×15×0.5	1	
20	384362	ENGRANAJE DEL GOBERNADOR DE RPM P/ MOTOR 6.5HP (168F) 196CC	rpm gear	1	
21			rpm gear gasket 6×15×0.5	1	
22			sliding sleeve	1	
23			oscillating bar	1	
24			gasket ring φ6	1	
25			back up spring	1	
26			rpm gun	1	
27			rpm arm	1	
28			bolt	1	
29			spring pin	1	
30			gasket ring φ6	1	
31			rpm spring	1	
32			Hexagon flange nut M6	1	
33			Hexagon flange bolt M6×12	2	
34			rpm base	1	
35	384370	BOBINA DE ENCENDIDO P/ MOTOR 6.5HP (168F) 196CC	ignition	1	

MOTOBOMBA A GASOLINA ALTA PRESION 1,5" X 1,5" HIERRO

Parte: MOTOBOMBA

Código 473116

Modelo XGWP15C

N°	Cód. Savake	Descripción Español	Descripción Ingles	Cant.	Observaciones
36			bolt M6×25	2	
37			oil alert	1	
38			oil seal 41.25×25×6	1	
39			bearing 6205	1	
40			connect rod cover	1	
41			connect rod bolt	2	
42			woodruff key 5×5.5×25	1	
43	384388	CIGÜEÑAL P/ MOTOR 6.5HP (168F) 196CC	crankshaft Q type	1	
44			crankcase gasket	1	
45			pin φ18×14	2	
46			bearing 6205	1	
47			oil seal 41.25×25×6	1	
48			crankcase cover	1	
49			oil plug	2	
50			Hexagon flange bolt M8×33	6	
51	384404	ARBOL DE LEVAS P/ MOTOR 6.5HP (168F) 196CC	camshaft	1	
52			arrow board	1	
53			Hexagon flange bolt M6×12	2	
54			stud AM8×20	2	
55			muffler gasket	1	
56	384412	SILENCIADOR P/ MOTOR 6HP (168F) 196CC	muffler	1	
57			gasket ring 8	2	
58			spring gasket ring 8	2	
59			nut M8	2	
60			Hexagon flange bolt M6×12	4	
61			cylinder head cover	1	
62			breath pipe	1	
63			cylinder head cover gasket	1	
64			rocker fasten nut	2	
65			valve adjust nut	2	
66			rocker	2	
67			rocker bolt	2	
68			guide board	1	
69			spark plug	1	
70			intake valve spring base	1	
71			exhaust valve spring base	1	
72			lid	1	
73			valve spring	2	
75			Hexagon flange bolt M8×55	4	
76			cylinder head	1	
77			pin φ10×14	2	
78			intake valve	1	
79			exhaust valve	1	
80			cylinder head gasket	1	
78			intake valve	1	
	384420	CAMARA COMPLETA P/ MOTOR 6.5HP (168F) 196CC			

MOTOBOMBA A GASOLINA ALTA PRESION 1,5" X 1,5" HIERRO

Parte: MOTOBOMBA

Código 473116

Modelo XGWP15C

N°	Cód. Savake	Descripción Español	Descripción Ingles	Cant.	Observaciones
79			exhaust valve	1	
81	384438	PISTON COMPLETO P/ MOTOR 6HP (168F) 196CC	The first air ring	1	
82			Second air ring	1	
83			Sheet ring	2	
84			Lining ring	1	
85			piston	1	
86			piston pin block ring 19	2	
87			piston pin	1	
81	384446	ANILLOS DEL PISTON P/ MOTOR 6.5HP (168F) 196CC	The first air ring	1	
82			Second air ring	1	
83			Sheet ring	2	
84			Lining ring	1	
85			piston	1	
86			piston pin block ring 19	2	
87			piston pin	1	
88			push rod	2	
89			tappet	2	
90	384453	BIELA P/ MOTOR 6.5HP (168F) 196CC	connect rod	1	
91			Hexagon flange nut M6	2	
92	384479	FILTRO DE AIRE P/ MOTOR 6.5HP (168F) 196CC	air filter	1	
93			air filter gasket	1	
94	384487	CARBURADOR P/ MOTOR 6.5HP (168F) 196CC	carburator	1	
95			carburator gasket	1	
96			heat shield	1	
97			heat shield gasket	1	
98			stud AM6×113	2	
99	384503	TAPA TANQUE DE COMBUSTIBLE P/ MOTOR 6HP (168F) 196CC	fuel tank cap	1	
100			filter cup	1	
101			fuel filter	1	
102			Hexagon flange bolt M6×28	1	
103	520197	TANQUE DE COMBUSTIBLE P/ MOTOR 6HP (168F) 196CC	fuel tank	1	
104			connector	1	

MOTOBOMBA A GASOLINA ALTA PRESION 1,5" X 1,5" HIERRO

Parte: MOTOBOMBA

Código 473116

Modelo XGWP15C

N°	Cód. Savake	Descripción Español	Descripción Ingles	Cant.	Observaciones
105			Hexagon flange nut M6	2	
106			fuel pipe	1	
107			clip	2	
108			nut M8	4	
109			frame	1	
110			bolt M8x30	4	
111			rubber feet	4	
112			nut M8	4	
113			bolt M10x20	4	
114	477679	BOMBA COMPLETA P/XGWP15C	pump cover	1	
115			gasket	4	
116			bolt	4	
117			mechanical seal	1	
118			connect shaft	1	
119			O ring	1	
120			impeller	1	
121			Pump body	1	
117	477703	SELLO MECANICO P/XGWP15C	mechnical seal	1	
120	477711	IMPELER P/ XGWP15C	impeller	1	
121			pump body	1	
122			plug	3	
123			transfer connector	1	
124			clip	1	
125			bottom valve	1	